

VOLVO PENTA	Document No	Issue Index
	23609274	01

D6-380 INB**General**

4-stroke direct injected, turbocharged and aftercooled diesel engine

Engine Rating		4
Number of cylinders		6
No of valves		24
Displacement, total	litres in ³	5.50 335.6
Firing order		1-5-3-6-2-4
Rotational direction, viewed from the front		Clockwise
Bore	mm in	103 4.06
Stroke	mm in	110 4.33
Compression ratio		18.0:1
Compression pressure at 240 rpm	MPa psi	
Max. static forward inclination:	°	0
Max. static backward inclination:	°	10
Max. intermittent forward inclination while running:	°	10
Max. intermittent backward inclination while running:	°	20
Max. intermittent side inclination while running:	°	20 or 30 for max 30 sec
Idling speed	rpm	600-650
Rated speed R4	rpm	3500
Governed speed R4	rpm	3630
Propeller selection range R4		3450-3630
Dry weight engine BT	kg lb	610 1345
Dry weight with reverse gear HS85A	kg lb	690 1521
Dry weight with reverse gear HS85IV	kg lb	720 1587
	kg lb	
	kg lb	

1) ISO 3046, fuel temp 40°C.

ISO 8665 (=SAE J 1228=ICOMIA 28-83)

2) At power according to 1).

3) If reverse gear is used, 4% in heat rejection will be added for its oil cooler.

4) Acc. to ISO 3744

5) At installed back pressure

VOLVO PENTA	Document No	Issue Index
	23609274	01

D6-380 INB

Performance	rpm	1000	1500	2000	2500	2800	3000	3200	3400	3500	3600
		Crankshaft power 1), 5)	kW	48	99	190	241	270	279	279	280
	hp	65	135	258	328	367	379	379	380	380	380
Propeller shaft power 1) (At full load)	kW	46	95	182	231	259	268	268	268	268	268
	hp	63	129	248	315	353	364	364	365	365	365
Propellershaft power at prop. load x ^{2.5}	kW	12	32	66	116	154	183	215	250	268	269
	hp	16	44	90	157	209	248	292	340	365	366
Propellershaft power at prop. load x ³	kW	6	21	50	98	137	169	205	246	268	269
	hp	9	29	68	133	187	230	279	335	365	366
Torque at crankshaft 2)	Nm	458.4	630.3	907.2	920.6	920.8	888.1	832.6	785.3	762.9	741.7
	lbf ft	338	465	669	679	679	655	614	579	563	547
Mean piston speed	m/s	3.7	5.5	7.3	9.2	10.3	11.0	11.7	12.5	12.8	13.2
	ft/s	12.0	18.0	24.1	30.1	33.7	36.1	38.5	40.9	42.1	43.3
Effective mean pressure 2)	MPa	1.05	1.44	2.07	2.10	2.10	2.03	1.90	1.79	1.74	1.69
	psi	151.9	208.9	300.7	305.1	305.2	294.3	275.9	260.3	252.8	245.8
Max combustion pressure 2)	MPa	12.6	16.4	19.3	19.1	18.0	17.7	17.0	16.7	16.4	16.3
	psi	1833	2379	2797	2765	2616	2563	2467	2419	2372	2361

Lubricating system

Specific lubricating oil consumption.	g/kWh	< 0.2
Max. oil volume including filters for all allowed installation inclinations:	litres	20
	US gal	5.28
Max. oil volume excluding filters for all allowed installation inclinations:	litres	18.5
	US gal	4.89
Min. oil volume excluding filters for all allowed installation inclinations:	litres	15
	US gal	3.96

Fuel system	rpm	1000	1500	2000	2500	2800	3000	3200	3400	3500	3600
Specific fuel consumption 2)	g/kWh	247	250	217	202	204	209	217	226	230	233
	lb/hph	0.4	0.405	0.352	0.327	0.33	0.339	0.352	0.366	0.373	0.377
Fuel consumption, Test cycle E5 EU	g/kWh	226									
	lb/hph	0.37									
Fuel consumption at prop. load x ^{2.5}	l/h	3.8	8.9	17.4	30.2	40.6	48.7	60.2	71.9	77.0	78.1
	US gal/h	1.0	2.4	4.6	8.0	10.7	12.9	15.9	19.0	20.3	20.6

Fuel system	rpm	1000	1500	2000	2500	2800	3000	3200	3400	3500	3600
Fuel consumption at prop. load x ³	l/h	2.6	6.4	13.7	26.0	37.0	45.5	57.3	70.9	77.0	78.1
	US gal/h	0.7	1.7	3.6	6.9	9.8	12.0	15.1	18.7	20.3	20.6
Fuel consumption at full load	l/h	14.2	29.6	49.3	58.3	65.9	69.8	72.5	75.6	77.0	78.0
	US gal/h	3.7	7.8	13.0	15.4	17.4	18.4	19.1	20.0	20.3	20.6

Full load performance at rated speed

Fuel inlet temperature	°C	40
	°F	104
Fuel return temperature from engine	°C	64
	°F	147.2
Fuel consumption	l/h	77.1
	US gal/h	20.37
Fuel inlet flow to engine	l/h	114.9
	US gal/h	30.35
Fuel return flow from engine	l/h	37.8
	US gal/h	9.99

1) ISO 3046, fuel temp 40°C.

ISO 8665 (=SAE J 1228=ICOMIA 28-83)

2) At power according to 1).

3) If reverse gear is used, 4% in heat rejection will be added for its oil cooler.

4) Acc. to ISO 3744

5) At installed back pressure

VOLVO PENTA	Document No	Issue Index
	23609274	01

D6-380 INB

Intake and exhaust system	rpm	1000	1500	2000	2500	2800	3000	3200	3400	3500	3600
Specific exhaust heating effect in percent of crankshaft power	%	49	54	54	50	53	56	60	66	67	69
Exhaust temperature at the exhaust pipe connecting flange after the turbo charger.	°C	376	467	453	371	367	364	370	379	379	383
	°F	709	873	847	700	693	687	698	714	714	721
Permitted exhaust back pressure after turbocharger at rated speed. (Installed back pressure)	kPa							Max	30		
	psi								4.4		
	kPa							Min	10		
	psi								1.5		

Intake and exhaust system	rpm	1000	1500	2000	2500	2800	3000	3200	3400	3500	3600
Engine air consumption at 25°C / 77°F atmospheric pressure 100kPA	m³/min	2.8	5	10.2	15.3	18.8	20.3	21.9	23.2	23.6	24.1
	cu.ft./min	98.88	176.6	360.2	540.3	663.9	716.9	773.4	819.3	833.4	851.1
Charge air pressure Inlet manifold	kPa	18	43	123	165	193	199	204	208	208	208
	psi	2.6	6.2	17.8	23.9	28.0	28.9	29.6	30.2	30.2	30.2
Exhaust gas flow	m³/min	6.7	13.7	25.6	32.2	37.4	39.3	41.6	43.6	44	44.8
	cu.ft./min	236.6	483.8	904.1	1137	1321	1388	1469	1540	1554	1582

Cooling system	rpm	1000	1500	2000	2500	2800	3000	3200	3400	3500	3600
Radiated heat of crankshaft power at full load.	kW	1.4	2.9	5.7	7.1	8.1	8.3	8.4	8.4	8.3	8.4
Heat rejection to charge air cooler of crankshaft power at full load.	kW	1.2	4.6	22.4	40.1	55.4	62.1	69.7	76.7	78.5	81.7
Coolant heat rejection to HE, incl. engine oil cooler and excl. charge air cooler, of crankshaft power at full load.	kW	51	103	143	150	163	184	178	184	188	204
Coolant flow with fully open thermostat and std cooling system	l/min	97	144	193	239	264	269	275	283	287	291
	cu.ft./min	3.4	5.1	6.8	8.4	9.3	9.5	9.7	10.0	10.1	10.3
Extra water pump flow through charge air cooler	l/min										
	cu.ft./min										
Max. pump pressure at extra pump pressure side (pressure set system)	kPa										
	psi										
Max. permissible temperature on coolant in engine outlet	°C	55									
	°F	131									
Coolant volume engine, including heat exchanger and charge air cooler	litres	16									
	US gal.	4.23									
Max. additional coolant for cabin heater etc. with std. Expansion tank	litres	5									
	US gal.	1.32									
Maximum coolant flow to cabin heater etc.	l/min	30									
	cu.ft./min	1.06									
Thermostat, start open at	°C	78									
	°F	172									
Thermostat, fully open at	°C	90									
	°F	194									

1) ISO 3046, fuel temp 40°C.

ISO 8665 (=SAE J 1228=ICOMIA 28-83)

2) At power according to 1).

3) If reverse gear is used, 4% in heat rejection will be added for its oil cooler.

4) Acc. to ISO 3744

5) At installed back pressure

VOLVO PENTA	Document No	Issue Index
	23609274	01

D6-380 INB

Raw water circuit	rpm	1000	1500	2000	2500	2800	3000	3200	3400	3500	3600
Nominal raw water design flow	l/min	77	111	144	174	189	198	207	214	218	220
	cu.ft./min	2.7	3.9	5.1	6.1	6.7	7.0	7.3	7.6	7.7	7.8
Nominal raw water pump pressure head at design flow.	kPa	27	49	82	118	138	151	165	176	181	188
	psi	3.9	7.1	11.9	17.1	20.0	21.9	23.9	25.5	26.3	27.3
Maximum raw water pump suction head	kPa	-30									
	psi	-4.4									
Maximum additional pressure drop excl. reverse gear oil cooler	kPa										
	psi										
Pressure drop over reverse gear oil cooler (optional equipment)	kPa										
	psi										
Maximum raw water temperature entering heat exchanger	°C	32									
	°F	90									

1 circuit keel cooling system	rpm	1000	1500	2000	2500	2800	3000	3200	3400	3500	3600
Design point for keel cooler, engine outlet temperature	°C										
	°F										
Maximum temperature to engine from external cooling system circuit	°C										
	°F										
Maximum temperature to engine inlet from external cooling system circuit	°C										
	°F										
Coolant flow through keel cooler at design point	l/min										
	cu.ft./min										
Maximum coolant flow through keel cooler	l/min										
	cu.ft./min										
Pressure drop in external circuit, including piping	kPa										
	psi										
Coolant volume engine	litres										
	US gal.										

1 1/2 circuit keel cooling system (Two circuit	rpm	1000	1500	2000	2500	2800	3000	3200	3400	3500	3600
Design point for keel cooler, engine outlet temperature	°C										
	°F										
Maximum temperature to charge air cooler from external cooling system circuit	°C										
	°F										
Coolant flow through keel cooler at design point	l/min										
	cu.ft./min										
Maximum coolant flow through keel cooler	l/min										
	cu.ft./min										
Pressure drop in external circuit, including piping	kPa										
	psi										
Coolant volume engine	litres										
	US gal.										

2 circuit keel cooling system, LT	rpm	1000	1500	2000	2500	2800	3000	3200	3400	3500	3600
Maximum temperature to charge air cooler from external LT-cooling system	°C										274
	°F										525
Coolant flow through keel cooler, LT-cooling system circuit	l/min										220
	cu.ft./min										7.8
Pressure drop in external LT-cooling system circuit, including piping	kPa	50									
	psi	7.3									
Coolant volume charge air cooler	litres	2									
	US gal.	0.53									

1) ISO 3046, fuel temp 40°C.

ISO 8665 (=SAE J 1228=ICOMIA 28-83)

2) At power according to 1).

3) If reverse gear is used, 4% in heat rejection will be added for its oil cooler.

4) Acc. to ISO 3744

5) At installed back pressure

VOLVO PENTA	Document No	Issue Index
	23609274	01

D6-380 INB

2 circuit keel cooling system, HT	rpm	1000	1500	2000	2500	2800	3000	3200	3400	3500	3600
Design point for keel cooler, engine outlet temperature	°C										83
	°F										181
Maximum temperature to engine from external HT-cooling system circuit	°C										57
	°F										135
Coolant flow through keel cooler, HT-cooling system circuit at design point	l/min										130
	cu.ft./min										4.6
Maximum coolant flow through keel cooler, HT-cooling system circuit	l/min										291
	cu.ft./min										10.3
Pressure drop in external HT-cooling system circuit, including piping	kPa	70									
	psi	10.2									
Coolant volume engine	litres	16									
	US gal.	4.23									

Emissions	rpm	1000	1500	2000	2500	2800	3000	3200	3400	3500	3600
Smoke at prop. load x ^{2.5}	*BSU	0.1	0.2	0.3	0.2	0.2	0.2	0.3	0.4	0.3	0.3
Smoke at prop. load x ³	*BSU	0.1	0.1	0.3	0.3	0.2	0.2	0.3	0.5	0.3	0.3
Noise at prop. load x ^{2.5} . 4)	dBA	98.7	102.3	105.1	108.4	110	110.7	111.8	112.3	112.9	113.3
Noise at prop. load x ³ . 4)	dBA	97.4	102.2	104.1	107.8	111.3	110.6	111.9	112.2	112.9	113.3

*NB.! BSU are calculated values. Measured values are acc. to ISO 10054 in FSN units

1) ISO 3046, fuel temp 40°C.

ISO 8665 (=SAE J 1228=ICOMIA 28-83)

2) At power according to 1).

3) If reverse gear is used, 4% in heat rejection will be added for its oil cooler.

4) Acc. to ISO 3744

5) At installed back pressure

VOLVO PENTA**D6-380 INB**

Document No

23609274

Issue Index

01

Sensors : Control and Monitoring System							Engine protection action
Sensors	Signal	Range	Unit	Warning Initial Delay / Warning Delay	Warning Level	Derating Level	
Coolant level switch	Digital	ON/OFF		30 sec from start / 5 sec	Low (ON / Closed)	NA	Warning only
Coolant temperature	50-0 kΩ	-40 - 140	°C	30 sec from start / 5 sec	96	99	See derating map
Fuel temperature	50-0 kΩ	-40 - 140	°C		60	NA	Warning only
Engine speed cam	Frequency		rpm	Instant	Lost signal	NA	Warning only
Engine speed crank	Frequency		rpm	Instant	Lost signal	NA	Warning only
Oil level sensor	Digital	ON/OFF		30 sec from start / 5 sec	Low level	NA	Warning only
Oil temperature	PT1000	-40 - 150	°C	30 sec from start / 5 sec	132	135	See derating map
Water In fuel switch	Digital	ON/OFF		All the time	Water in fuel	NA	Warning only
Wet Exhaust temp	PT200	0 - 850	°C	30 sec from start / 5 sec	90	95	See derating map

Sensors (rpm dependent)	Signal	Range	Unit	Initial Delay / Delay	Warning Level / Derating Level / Shutdown Level rpm Map					Comment
					0 rpm	1200 rpm	2000 rpm	2500 rpm	3600 rpm	
Charge air temperature	50-0 kΩ	-40 - 130	°C		0 rpm	1200 rpm	2000 rpm	2500 rpm	3600 rpm	
Warning Level			°C	30 sec from start / 5 sec	100	100	70	70	70	
Derating Level			°C							See derating map
Fuel pressure	0,5-4,5 V	0-200	kPa		0 rpm	600 rpm	1600 rpm	2600 rpm	3600 rpm	
Warning Level			kPa	30 sec from start / 5 sec	50	50	50	50	50	
Derating Level			kPa	NA	NA	NA	NA	NA	NA	
Oil pressure	0,5-4,5 V	0-700	kPa		0 rpm	600 rpm	1200 rpm	2000 rpm	3600 rpm	
Warning Level			kPa	30 sec from start / 5 sec	-50	75	150	200	230	
Derating Level (30% remain trq.)			kPa	10% trq. decr. per sec	-50	70	120	170	200	

Warning = Yellow Lamp active

Derating = Red Lamp active

VOLVO PENTA

Document No

Issue Index

23609274**01****D6-380 INB**

Remarks

Charge Air Temp [°C]	rpm	75°C	80°C	85°C
Remaining torque in %	600	100%	100%	100%
	1600	100%	100%	100%
	2200	100%	75%	50%

Coolant temp [°C]	rpm	99°C	104°C	108°C
Remaining torque in %	600	100%	100%	100%
	1600	100%	85%	75%
	2200	100%	75%	50%

Oil temp [°C]	rpm	135°C	137.5°C	140°C
Remaining torque in %	600	100%	100%	100%
	1600	100%	85%	75%
	2200	100%	75%	50%

Oil pressure [kPa]	rpm	
Remaining torque in %	600	85%
	1600	70%
	2200	50%

Wet exhaust temp [°C]	rpm	95°C	105°C	115°C	125°C
Remaining torque in %	600	100%	100%	100%	100%
	1600	100%	85%	80%	75%
	2200	100%	75%	65%	50%

VOLVO PENTA	Document No	Issue Index
	23609274	01

D6-380 INB

Transmission: Control and Monitoring System: DPI Drive							Engine protection action
Sensors	Signal	Range	Unit	Warning Initial Delay / Warning Delay	Warning Level	Derating Level	
Gear oil temperature (EVC)	50-0 kΩ	-30 - 130±4%	°C	N/A	95		Warning only
Gear oil pressure (EVC)	Frequency	0-3000±3%	kPa	60 sec from start / 7 sec	700		Warning only

Transmission: Control and Monitoring System: Reverse Gear							Engine protection action
Sensors	Signal	Range	Unit	Warning Initial Delay / Warning Delay	Warning Level	Derating Level	
Gear oil temperature (EVC)	50-0 kΩ	-30 - 130±4%	°C	N/A	95		Warning only

Transmission: Control and Monitoring System: IPS Drive							Engine protection action
Sensors	Signal	Range	Unit	Warning Initial Delay / Warning Delay	Warning Level	Derating Level	
Gear oil temperature (EVC)	50-0 kΩ	-30 - 130±4%	°C	N/A	95		Warning only
Gear oil pressure (EVC)	Frequency	0-3000±3%	kPa	60 sec from start / 7 sec	700		Warning only

VOLVO PENTA

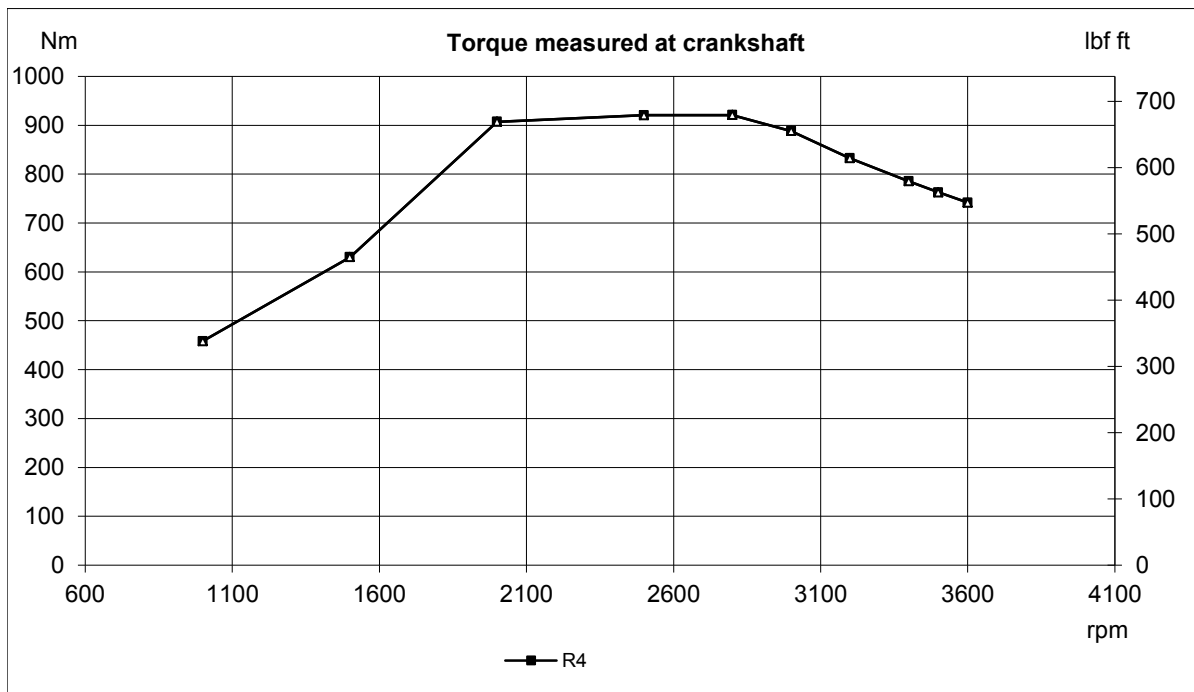
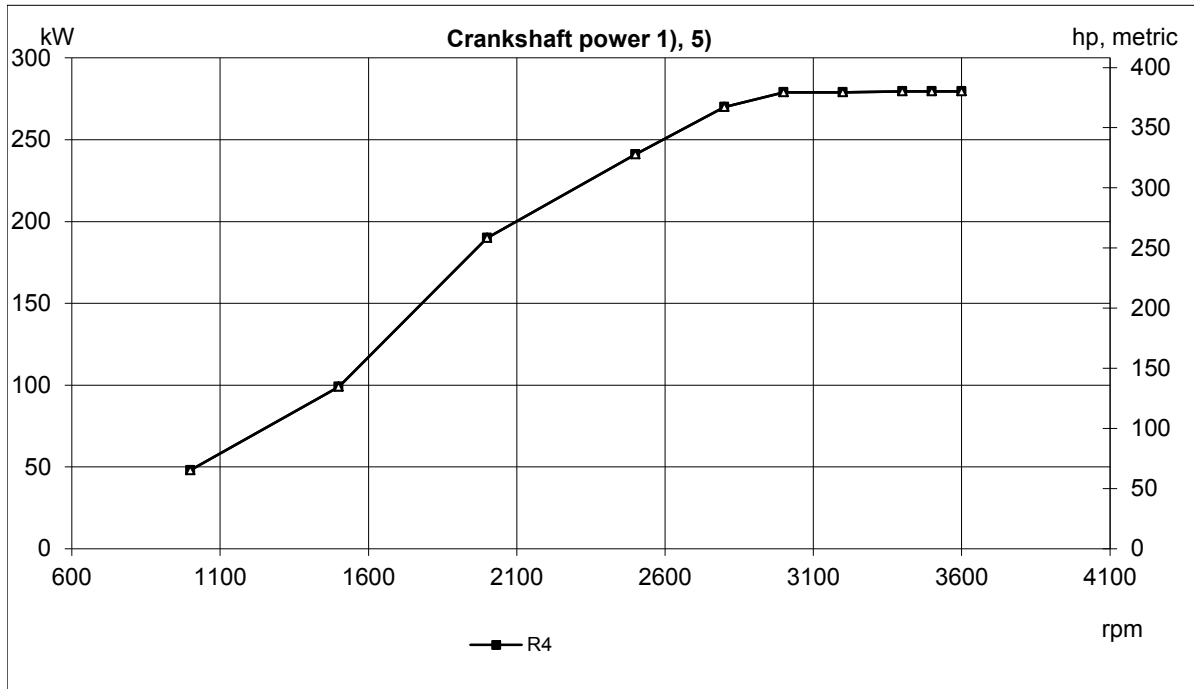
D6-380 INB

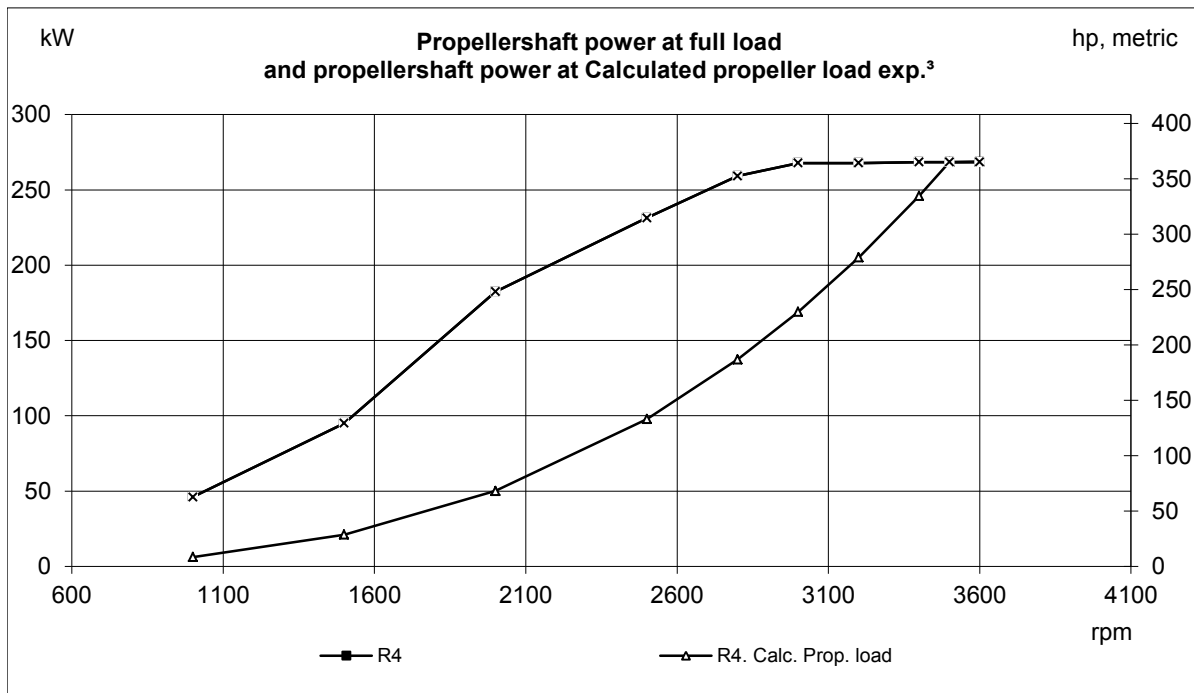
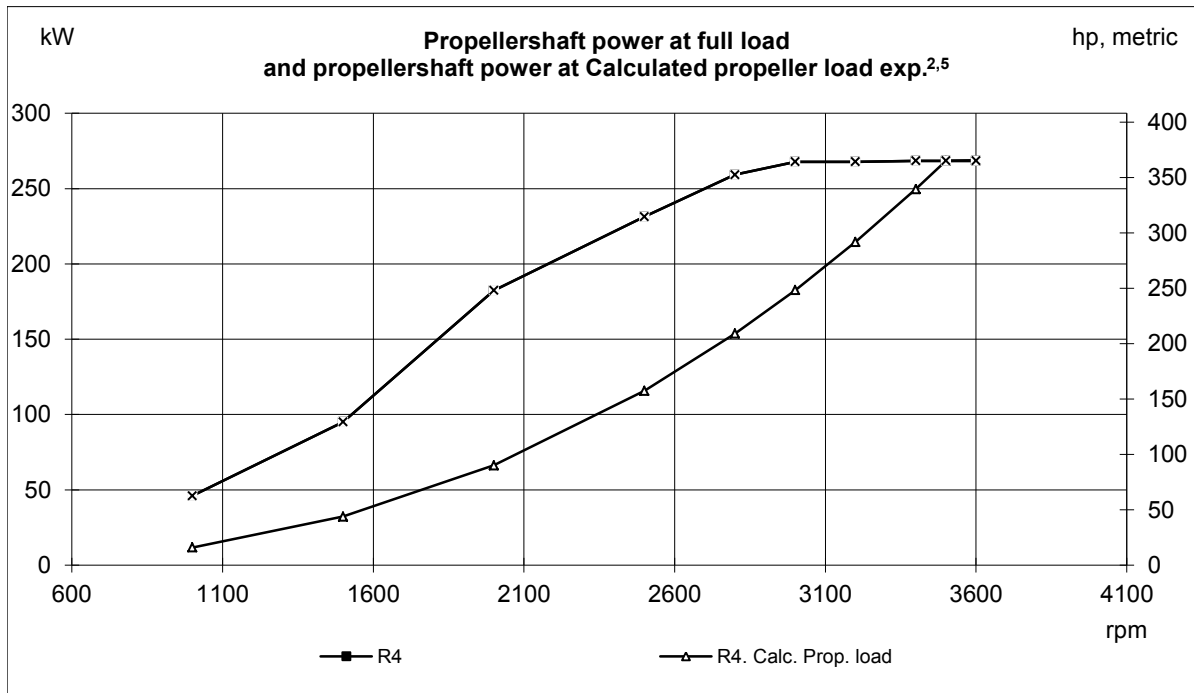
Document No

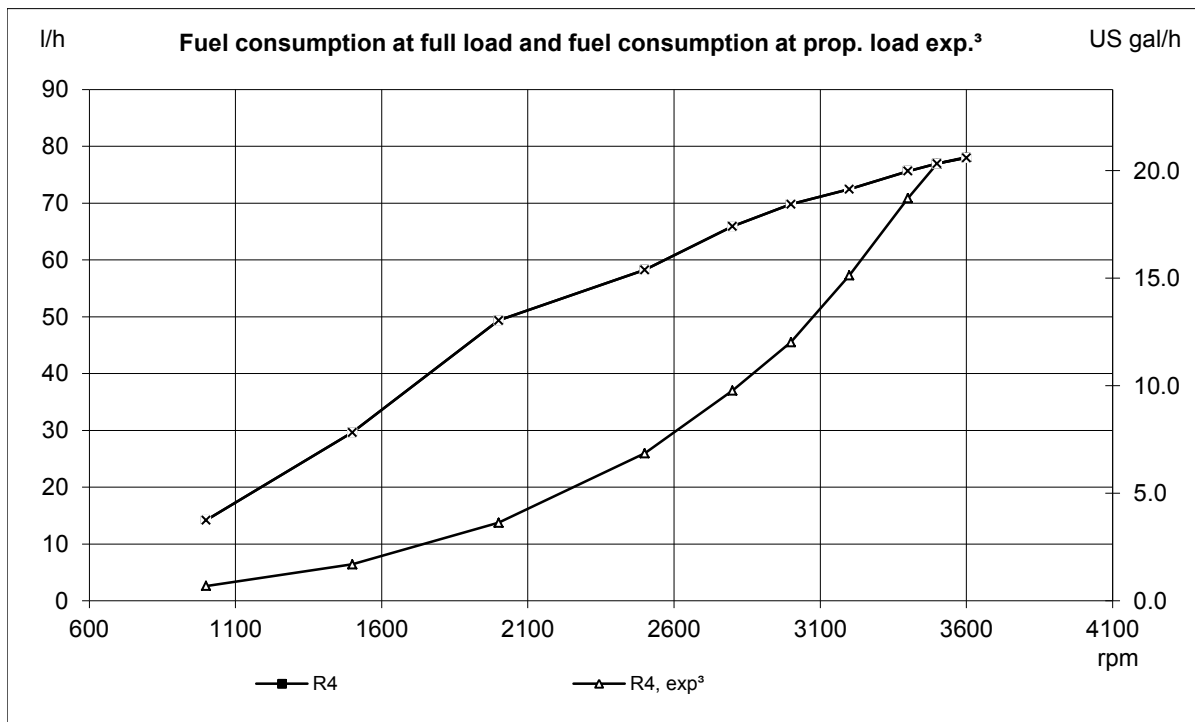
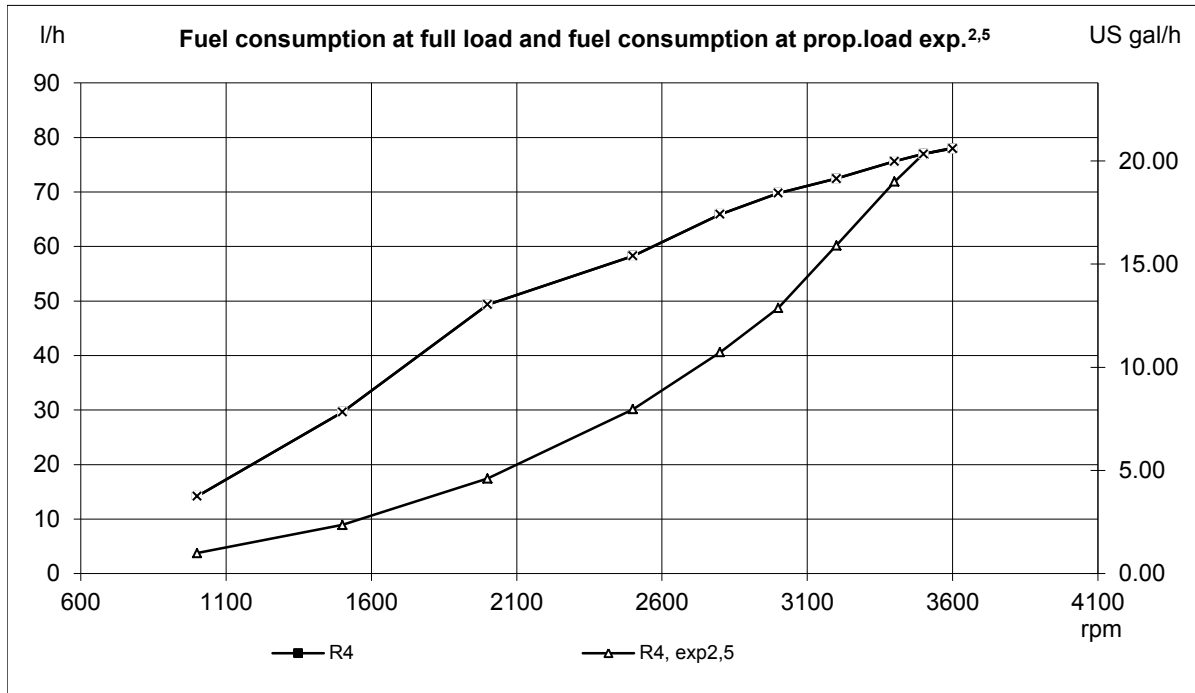
23609274

Issue Index

01







VOLVO PENTA

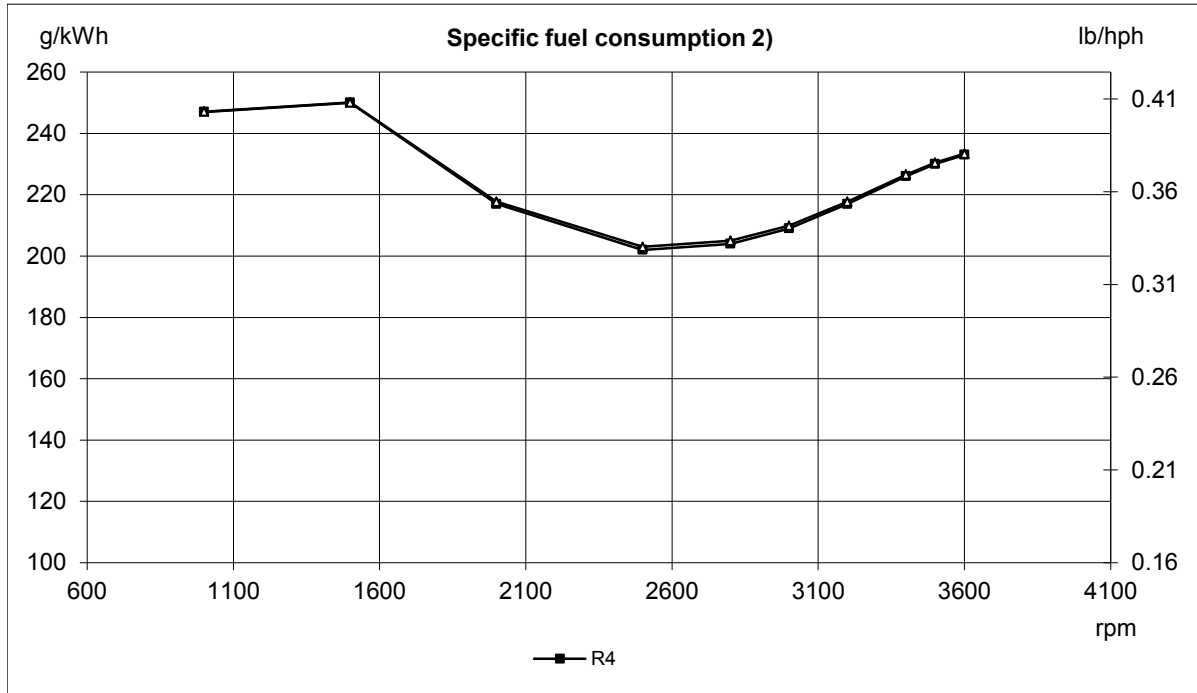
Document No

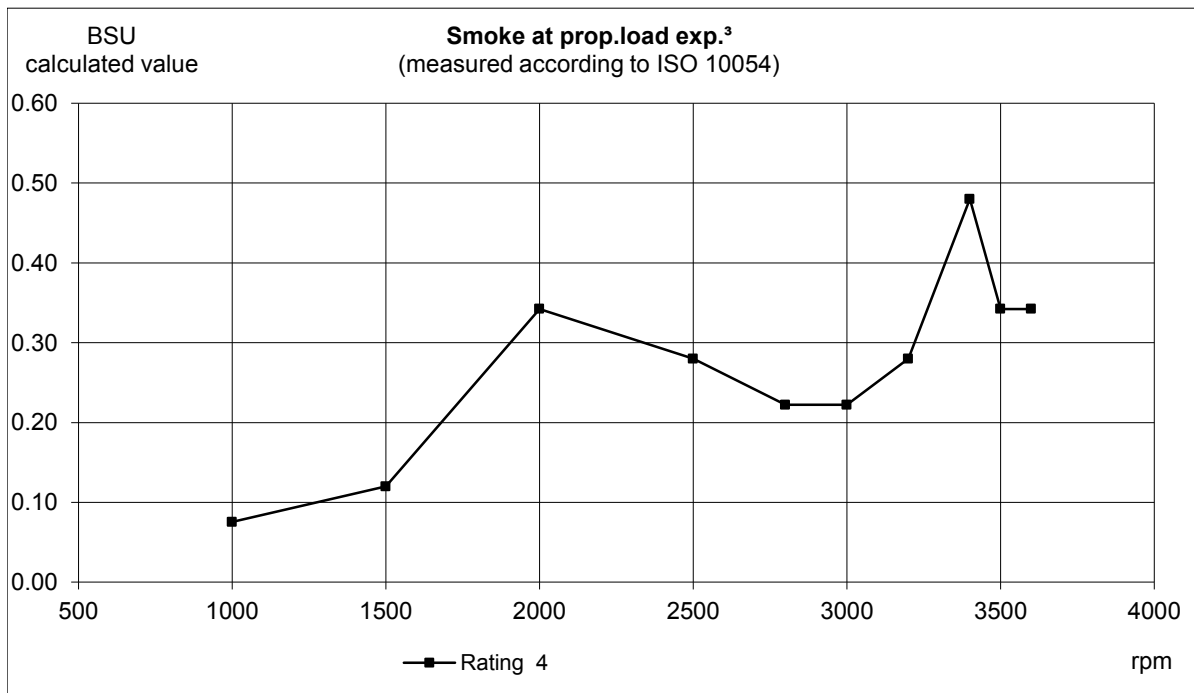
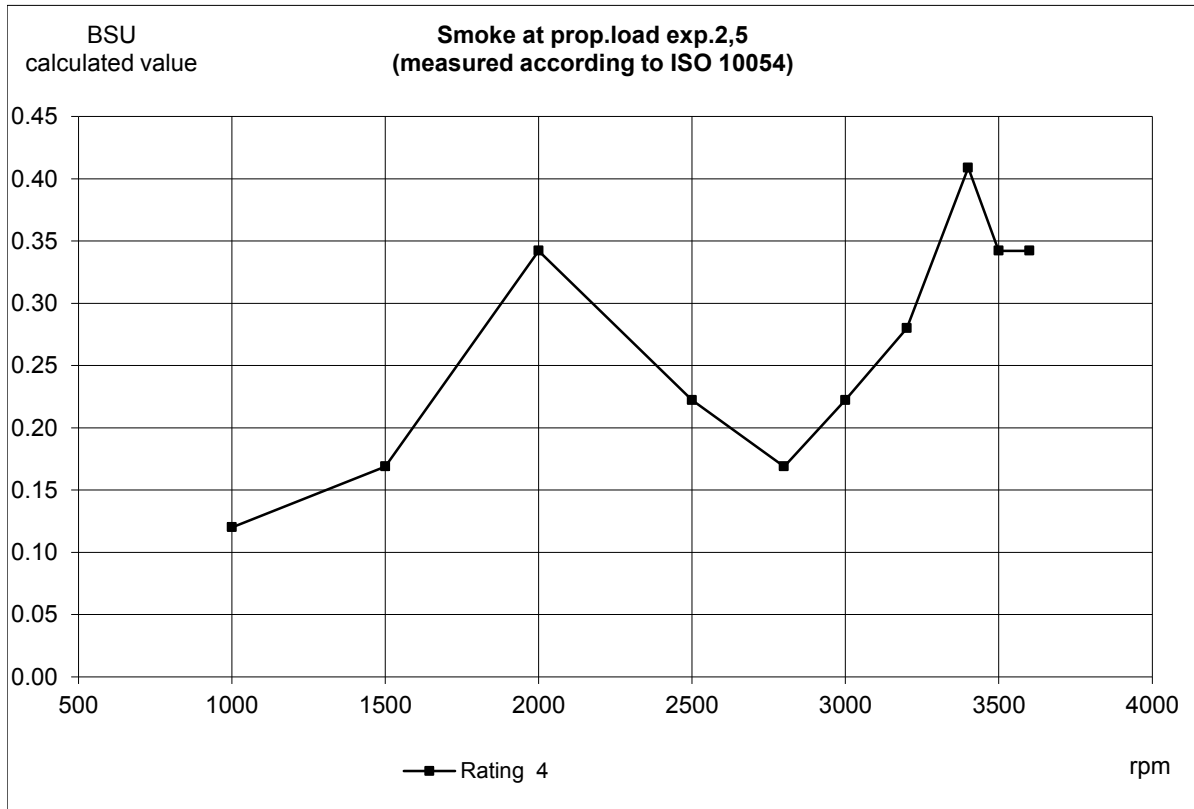
23609274

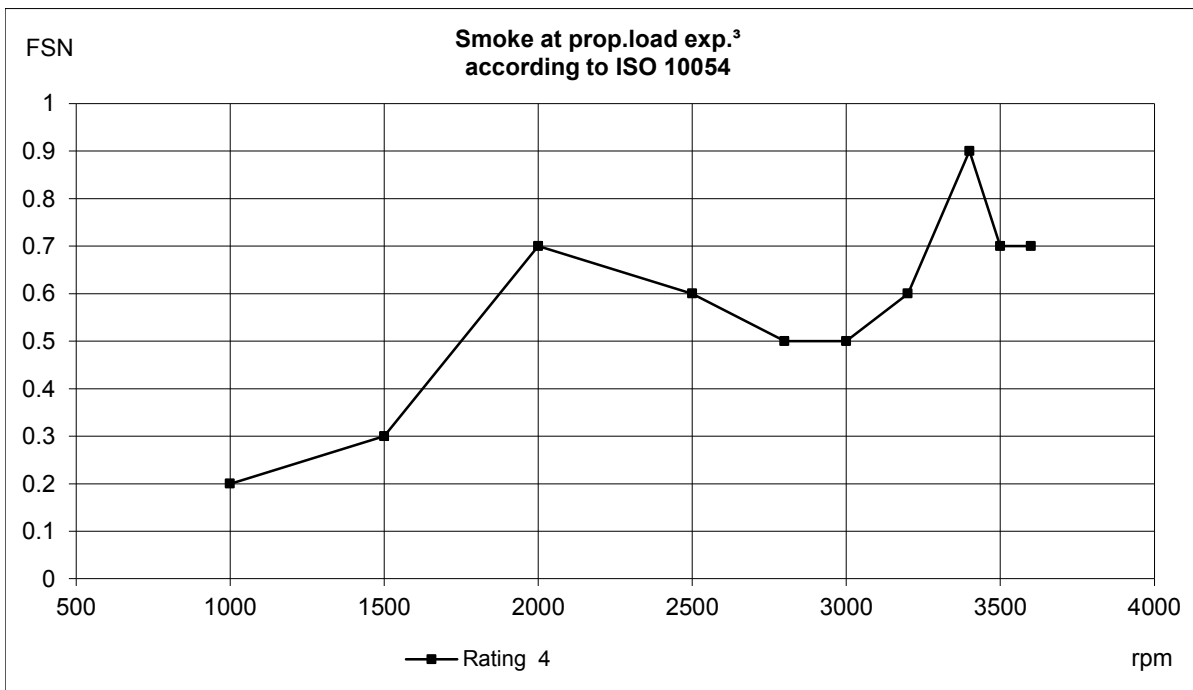
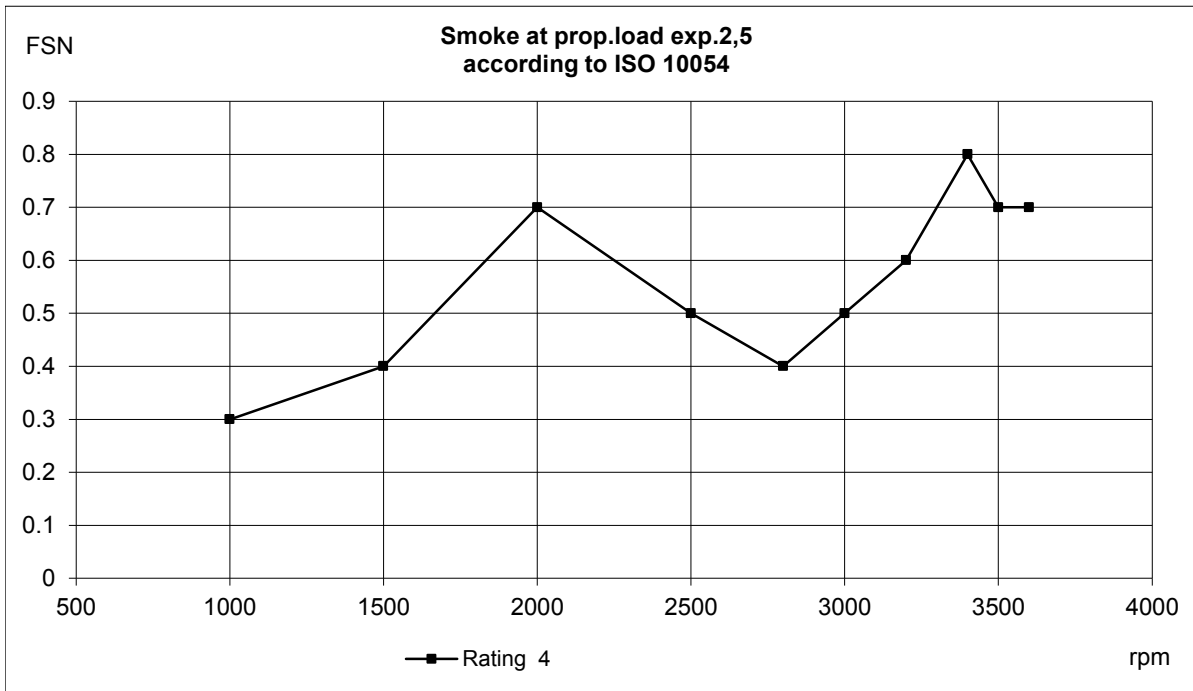
Issue Index

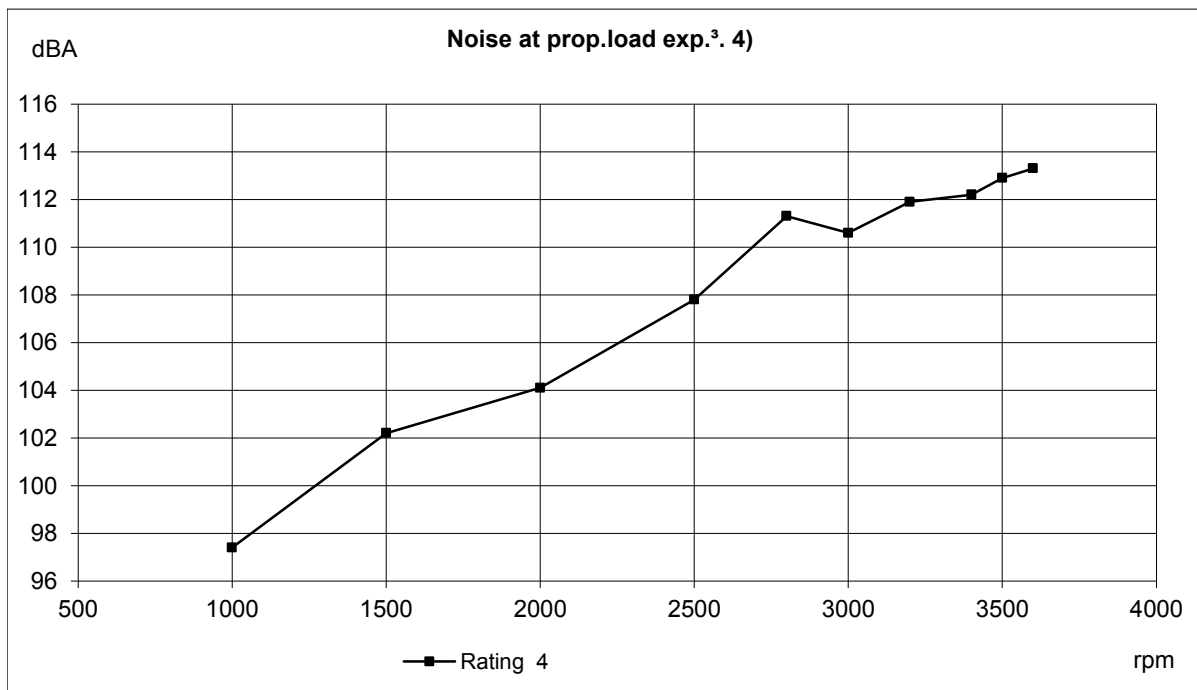
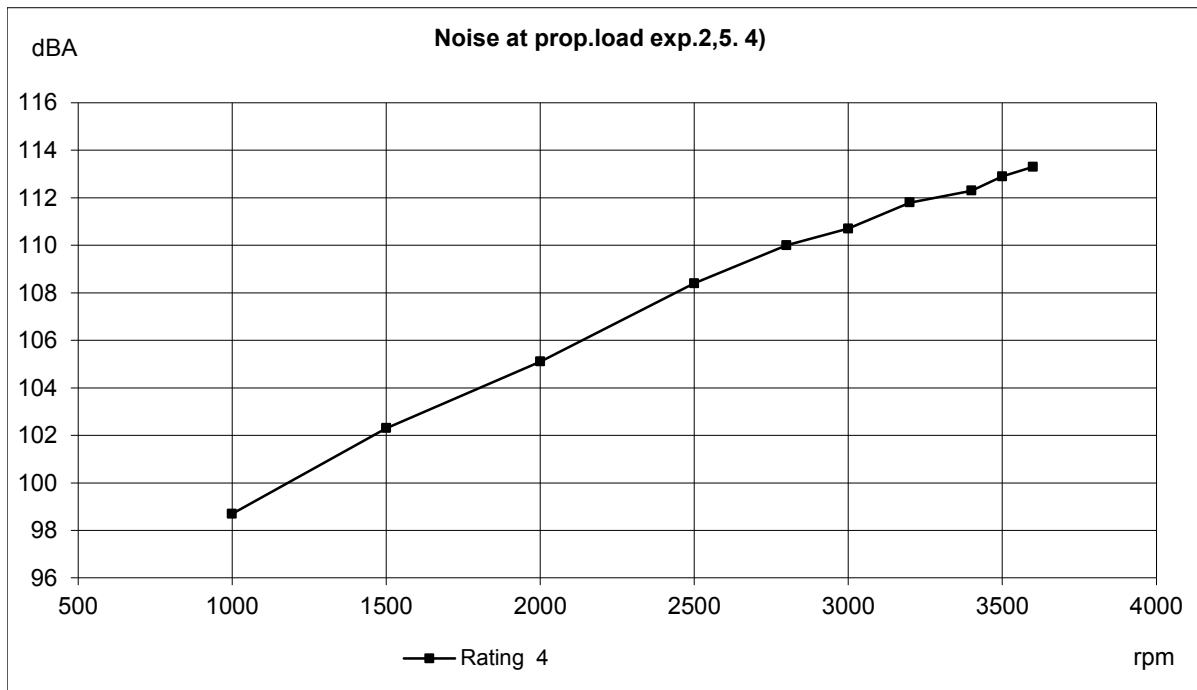
01

D6-380 INB









VOLVO PENTA	Document No	Issue Index
	23609274	01

D6-380 INB

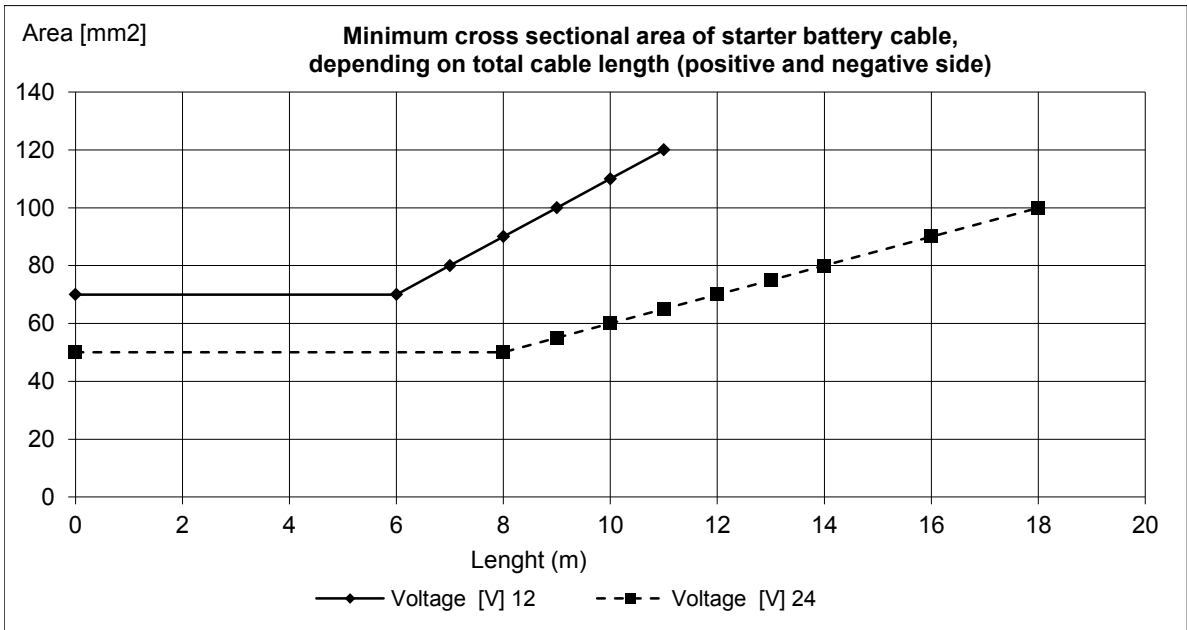
Battery capacity 12V

Temp [°C]	Min battery size [Ah]	CCA EN (Cold cranking Amps) [A]	Max line resistance @ 20°C [mΩ]	Recommended max cable resistance @ 20°C [mΩ]	Min cross sectional area (due to heat increase) [mm²]
5	95	750 (EN)	2	1.8	70
-5	110	850 (EN)	2	1.8	70

Battery capacity 24V

5	70	600(EN)	2	1.8	50
-5	75	750 (EN)	2	1.8	50

Minimum cable cross sectional area



Fuses size:

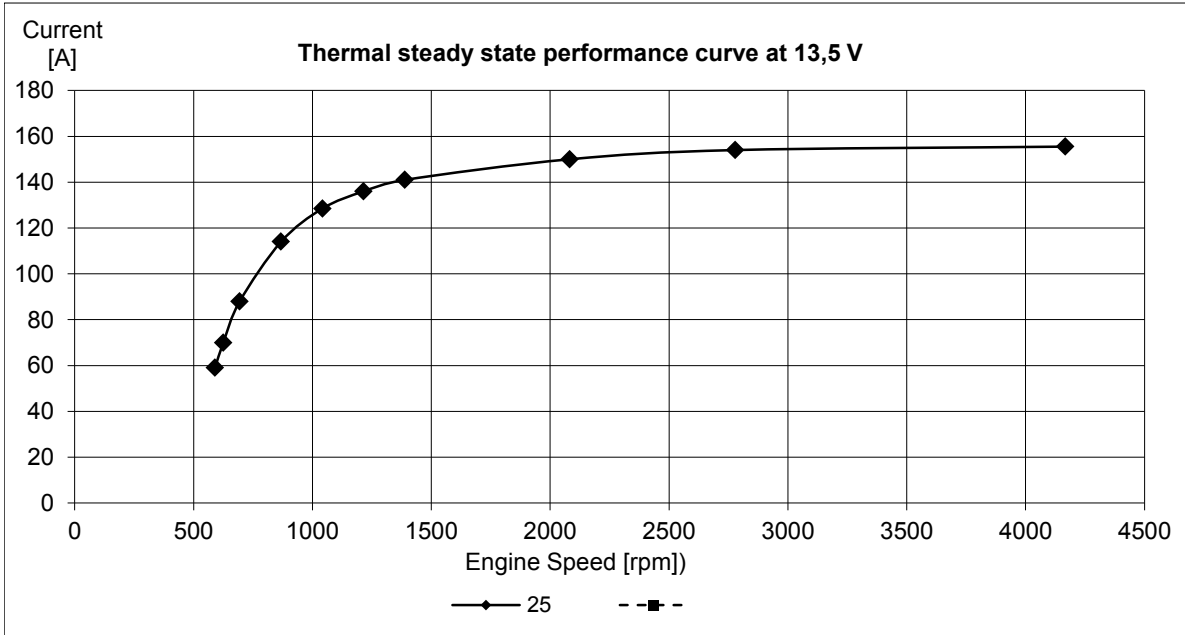
	[A]
Engine:	10
Control system:	10

Max current consumption during normal operation:

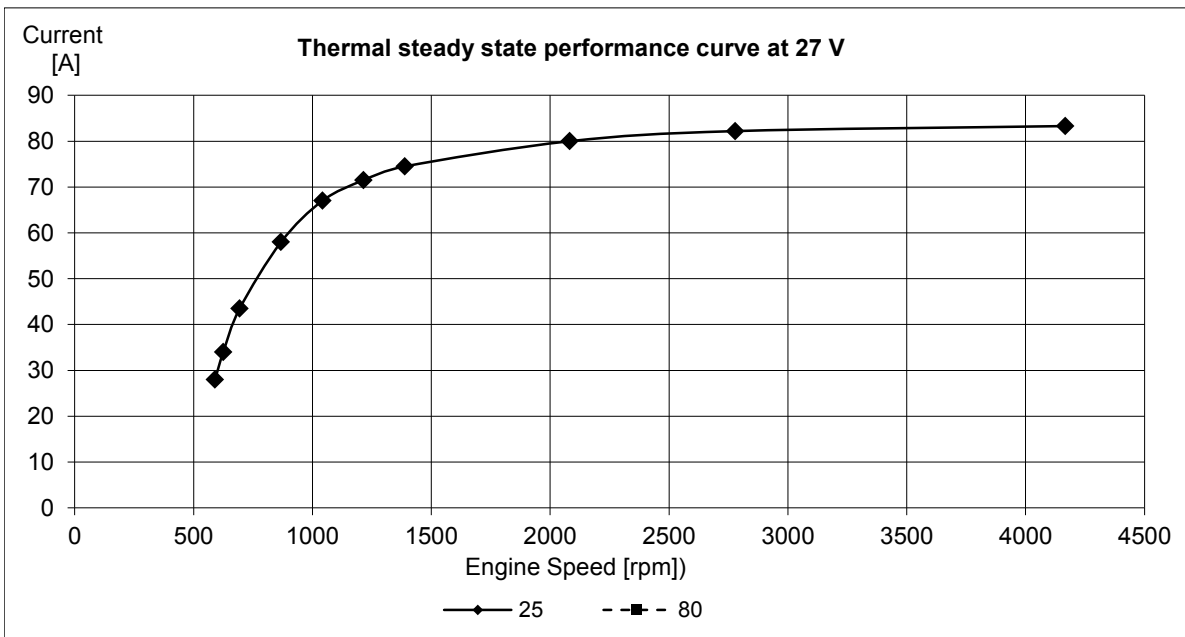
	[A]
Engine :	2 - 4

Alternator data:

Standard alternator charge curve (current vs. engine speed.)



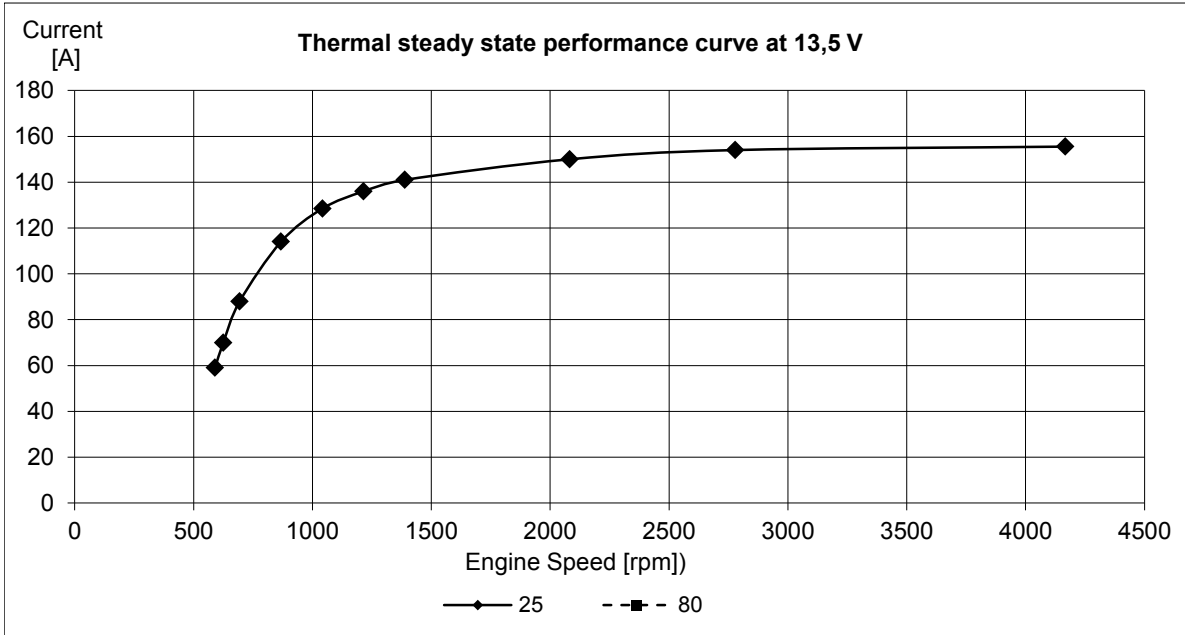
Constant charge voltage: [V]	14.3	+/- 0,3
------------------------------	------	---------



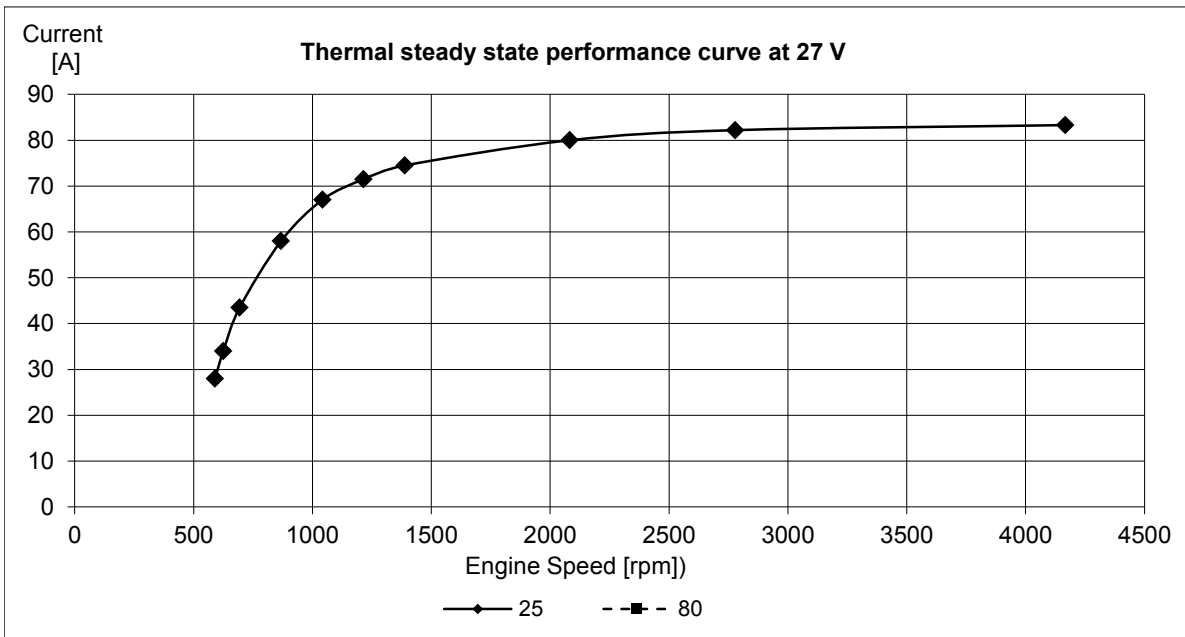
Constant charge voltage: [V]	28.3	+/- 0,3
------------------------------	------	---------

Alternator data:

Extra alternator charge curve (current vs. engine speed.)



Constant charge voltage: [V]	14.3	+/- 0,3
------------------------------	------	---------



Constant charge voltage: [V]	28.3	+/- 0,3
------------------------------	------	---------