

VOLVO PENTA	Document No	Issue Index
	23609268	03

D6-300 INB**General**

4-stroke direct injected, turbocharged and aftercooled diesel engine

Engine Rating		4
Number of cylinders		6
No of valves		24
Displacement, total	litres in ³	5.50 335.6
Firing order		1-5-3-6-2-4
Rotational direction, viewed from the front		Clockwise
Bore	mm in	103 4.06
Stroke	mm in	110 4.33
Compression ratio		18.0:1
Compression pressure at 240 rpm	MPa psi	
Max. static forward inclination:	°	5
Max. static backward inclination:	°	10
Max. intermittent forward inclination while running:	°	10
Max. intermittent backward inclination while running:	°	20
Max. intermittent side inclination while running:	°	22.5 or 30 for max 30 sec
Idling speed	rpm	600-650
Rated speed R4	rpm	3300
Governed speed R4	rpm	3430
Propeller selection range R4		3250-3430
Dry weight engine BT	kg lb	610 1345
Dry weight with reverse gear HS85A	kg lb	690 1521
Dry weight with reverse gear HS85IV	kg lb	720 1587
Dry weight with reverse gear HS 68 A	kg lb	665 1466
Dry weight with reverse gear HS 68 IV	kg lb	695 1532

- 1) ISO 3046, fuel temp 40°C.
ISO 8665 (=SAE J 1228=ICOMIA 28-83)
- 2) At power according to 1).
- 4) Acc. to ISO 3744
- 5) At installed back pressure

VOLVO PENTA	Document No	Issue Index
	23609268	03

D6-300 INB

Performance	rpm	1000	1500	2000	2500	2800	3000	3100	3200	3300	3400
		Crankshaft power 1), 5)	kW	48	99	161	202	218	221	221	221
	hp	65	135	219	275	296	300	300	300	300	300
Propeller shaft power 1) (At full load)	kW	46	95	155	194	209	212	212	212	212	212
	hp	63	129	210	264	285	288	288	288	288	288
Propellershaft power at prop. load x ^{2.5}	kW	11	29	61	106	140	167	181	196	212	212
	hp	15	40	82	144	191	227	246	267	288	289
Propellershaft power at prop. load x ³	kW	6	20	47	92	129	159	176	193	212	212
	hp	8	27	64	125	176	216	239	263	288	289
Torque at crankshaft 2)	Nm	458.4	630.3	768.7	771.6	743.5	702.2	679.5	658.3	638.4	619.6
	lbf ft	338	465	567	569	548	518	501	486	471	457
Mean piston speed	m/s	3.7	5.5	7.3	9.2	10.3	11.0	11.4	11.7	12.1	12.5
	ft/s	12.0	18.0	24.1	30.1	33.7	36.1	37.3	38.5	39.7	40.9
Effective mean pressure 2)	MPa	1.05	1.44	1.76	1.76	1.70	1.60	1.55	1.50	1.46	1.42
	psi	151.9	208.9	254.8	255.7	246.4	232.7	225.2	218.2	211.6	205.3
Max combustion pressure 2)	MPa	12.6	16.3	17.2	16.5	15.1	14.0	13.8	13.8	13.6	13.7
	psi	1824	2370	2499	2398	2194	2032	1996	1995	1978	1992

Lubricating system

Specific lubricating oil consumption.	g/kWh	< 0.2
Max. oil volume including filters for all allowed installation inclinations:	litres	20
	US gal	5.28
Max. oil volume excluding filters for all allowed installation inclinations:	litres	18.5
	US gal	4.89
Min. oil volume excluding filters for all allowed installation inclinations:	litres	15
	US gal	3.96

Fuel system	rpm	1000	1500	2000	2500	2800	3000	3100	3200	3300	3400
Specific fuel consumption 2)	g/kWh	260	252	211	203	206	215	219	223	226	230
	lb/hph	0.421	0.408	0.342	0.329	0.334	0.348	0.355	0.361	0.366	0.373
Fuel consumption, Test cycle E5 EU	g/kWh	225									
	lb/hph	0.36									
Fuel consumption at prop. load x ^{2.5}	l/h	3.5	8.3	16.5	28.0	37.3	45.6	49.9	54.5	59.7	60.8
	US gal/h	0.9	2.2	4.4	7.4	9.9	12.0	13.2	14.4	15.8	16.1

Fuel system	rpm	1000	1500	2000	2500	2800	3000	3100	3200	3300	3400
Fuel consumption at prop. load x ³	l/h	2.5	6.2	13.4	24.9	35.2	43.6	48.6	53.7	59.7	60.8
	US gal/h	0.7	1.6	3.5	6.6	9.3	11.5	12.8	14.2	15.8	16.1
Fuel consumption at full load	l/h	14.9	29.9	40.7	49.1	53.7	56.8	57.8	58.9	59.7	60.7
	US gal/h	3.9	7.9	10.7	13.0	14.2	15.0	15.3	15.6	15.8	16.0

Full load performance at rated speed

Fuel inlet temperature	°C	40
	°F	104
Fuel return temperature from engine	°C	64
	°F	147.2
Fuel consumption	l/h	59.8
	US gal/h	15.80
Fuel inlet flow to engine	l/h	96.8
	US gal/h	25.57
Fuel return flow from engine	l/h	37
	US gal/h	9.77

1) ISO 3046, fuel temp 40°C.

ISO 8665 (=SAE J 1228=ICOMIA 28-83)

2) At power according to 1).

4) Acc. to ISO 3744

5) At installed back pressure

VOLVO PENTA	Document No	Issue Index
	23609268	03

D6-300 INB

Intake and exhaust system	rpm	1000	1500	2000	2500	2800	3000	3100	3200	3300	3400
Specific exhaust heating effect in percent of crankshaft power	%	49	55	52	52	54	59	64	66	66	68
Exhaust temperature at the exhaust pipe connecting flange after the turbo charger.	°C	383	469	435	364	348	345	345	347	348	349
	°F	721	876	815	687	658	653	653	657	658	660
Permitted exhaust back pressure after turbocharger at rated speed. (Installed back pressure)	kPa							Max	30		
	psi								4.4		
	kPa							Min	10		
	psi								1.5		

Intake and exhaust system	rpm	1000	1500	2000	2500	2800	3000	3100	3200	3300	3400
Engine air consumption at 25°C / 77°F atmospheric pressure 100kPA	m³/min	2.8	5.1	8.8	13.4	16.5	18.3	19.0	19.7	20.3	20.9
	cu.ft./min	98.88	180.1	310.8	473.2	582.7	646.3	671	695.7	716.9	738.1
Charge air pressure Inlet manifold	kPa	18	43	89	130	154	164	167	169	171	171
	psi	2.6	6.2	12.9	18.9	22.3	23.8	24.2	24.5	24.8	24.8
Exhaust gas flow	m³/min	6.8	13.8	21.5	27.6	31.3	33.3	34.1	35.0	35.7	36.2
	cu.ft./min	240.1	487.3	759.3	974.7	1105	1176	1204	1236	1261	1278

Cooling system	rpm	1000	1500	2000	2500	2800	3000	3100	3200	3300	3400
Radiated heat of crankshaft power at full load.	kW	1.4	3.0	4.8	5.9	6.5	6.5	6.6	6.6	6.6	6.6
Heat rejection to charge air cooler of crankshaft power at full load.	kW	1.2	4.8	15.0	29.4	41.5	48.2	54.3	56.5	56.5	59.3
Coolant heat rejection to HE, incl. engine oil cooler and excl. charge air cooler, of crankshaft power at full load.	kW	51.1	103.0	124.1	126.9	137.8	144.4	148.0	137.2	139.9	156.1
Coolant flow with fully open thermostat and std cooling system	l/min	97	144	193	239	264	269	275	278	278	283
	cu.ft./min	3.4	5.1	6.8	8.4	9.3	9.5	9.7	9.8	9.8	10.0
Extra water pump flow through charge air cooler	l/min										
	cu.ft./min										
Max. pump pressure at extra pump pressure side (pressure set system)	kPa										
	psi										
Max. permissible temperature on coolant in engine outlet	°C	55									
	°F	131									
Coolant volume engine, including heat exchanger and charge air cooler	litres	16									
	US gal.	4.23									
Max. additional coolant for cabin heater etc. with std. Expansion tank	litres	5									
	US gal.	1.32									
Maximum coolant flow to cabin heater etc.	l/min	30									
	cu.ft./min	1.06									
Thermostat, start open at	°C	78									
	°F	172									
Thermostat, fully open at	°C	90									
	°F	194									

- 1) ISO 3046, fuel temp 40°C.
ISO 8665 (=SAE J 1228=ICOMIA 28-83)
- 2) At power according to 1).
- 4) Acc. to ISO 3744
- 5) At installed back pressure

VOLVO PENTA	Document No	Issue Index
	23609268	03

D6-300 INB

Raw water circuit	rpm	1000	1500	2000	2500	2800	3000	3100	3200	3300	3400
Nominal raw water design flow	l/min	77	111	144	174	189	198	203	207	211	214
	cu.ft./min	2.7	3.9	5.1	6.1	6.7	7.0	7.2	7.3	7.5	7.6
Nominal raw water pump pressure head at design flow.	kPa	27	51	83	118	139	151	165	171	171	177
	psi	3.9	7.4	12.0	17.1	20.2	21.9	23.9	24.8	24.8	25.7
Maximum raw water pump suction head	kPa	-30									
	psi	-4.4									
Maximum additional pressure drop excl. reverse gear oil cooler	kPa										
	psi										
Pressure drop over reverse gear oil cooler (optional equipment)	kPa										
	psi										
Maximum raw water temperature entering heat exchanger	°C	32									
	°F	90									

1 circuit keel cooling system	rpm	1000	1500	2000	2500	2800	3000	3100	3200	3300	3400
Design point for keel cooler, engine outlet temperature	°C										
	°F										
Maximum temperature to engine from external cooling system circuit	°C										
	°F										
Maximum temperature to engine inlet from external cooling system circuit	°C										
	°F										
Coolant flow through keel cooler at design point	l/min										
	cu.ft./min										
Maximum coolant flow through keel cooler	l/min										
	cu.ft./min										
Pressure drop in external circuit, including piping	kPa										
	psi										
Coolant volume engine	litres										
	US gal.										

1 1/2 circuit keel cooling system (Two circuit	rpm	1000	1500	2000	2500	2800	3000	3100	3200	3300	3400
Design point for keel cooler, engine outlet temperature	°C										
	°F										
Maximum temperature to charge air cooler from external cooling system circuit	°C										
	°F										
Coolant flow through keel cooler at design point	l/min										
	cu.ft./min										
Maximum coolant flow through keel cooler	l/min										
	cu.ft./min										
Pressure drop in external circuit, including piping	kPa										
	psi										
Coolant volume engine	litres										
	US gal.										

2 circuit keel cooling system, LT	rpm	1000	1500	2000	2500	2800	3000	3100	3200	3300	3400
Maximum temperature to charge air cooler from external LT-cooling system	°C										27
	°F										81
Coolant flow through keel cooler, LT-cooling system circuit	l/min										214
	cu.ft./min										7.6
Pressure drop in external LT-cooling system circuit, including piping	kPa	50									
	psi	7.3									
Coolant volume charge air cooler	litres	2									
	US gal.	0.53									

- 1) ISO 3046, fuel temp 40°C.
ISO 8665 (=SAE J 1228=ICOMIA 28-83)
- 2) At power according to 1).
- 4) Acc. to ISO 3744
- 5) At installed back pressure

VOLVO PENTA	Document No	Issue Index
	23609268	03

D6-300 INB

2 circuit keel cooling system, HT	rpm	1000	1500	2000	2500	2800	3000	3100	3200	3300	3400
Design point for keel cooler, engine outlet temperature	°C										83
	°F										181
Maximum temperature to engine from external HT-cooling system circuit	°C										63
	°F										145
Coolant flow through keel cooler, HT-cooling system circuit at design point	l/min										125
	cu.ft./min										4.4
Maximum coolant flow through keel cooler, HT-cooling system circuit	l/min										283
	cu.ft./min										10.0
Pressure drop in external HT-cooling system circuit, including piping	kPa	70									
	psi	10.2									
Coolant volume engine	litres	16									
	US gal.	4.23									

Emissions	rpm	1000	1500	2000	2500	2800	3000	3100	3200	3300	3400
Smoke at prop. load x ^{2.5}	*BSU	0.1	0.2	0.4	0.3	0.2	0.3	0.3	0.3	0.3	0.4
Smoke at prop. load x ³	*BSU	0.1	0.1	0.5	0.3	0.3	0.3	0.3	0.3	0.3	0.4
Noise at prop. load x ^{2.5} . 4)	dBA	98.7	101.9	104.4	108	110.9	109.9	110.7	111.1	111.7	112.1
Noise at prop. load x ³ . 4)	dBA	97.1	101.7	103.4	107.4	110.5	110.1	111	111.4	112	112.1

*NB.! BSU are calculated values. Measured values are acc. to ISO 10054 in FSN units

1) ISO 3046, fuel temp 40°C.
 ISO 8665 (=SAE J 1228=ICOMIA 28-83)
 2) At power according to 1).
 4) Acc. to ISO 3744
 5) At installed back pressure

Sensors : Control and Monitoring System							
Sensors	Signal	Range	Unit	Warning Initial Delay / Warning Delay	Warning Level	Derating Level	Engine protection action
Coolant level switch	Digital	ON/OFF		30 sec from start / 5 sec	Low (ON / Closed)	NA	Warning only
Coolant temperature	50-0 kΩ	-40 - 140	°C	30 sec from start / 5 sec	96	99	See derating map
Fuel temperature	50-0 kΩ	-40 - 140	°C		60	NA	Warning only
Engine speed cam	Frequency		rpm	Instant	Lost signal	NA	Warning only
Engine speed crank	Frequency		rpm	Instant	Lost signal	NA	Warning only
Oil level sensor	Digital	ON/OFF		30 sec from start / 5 sec	Low level	NA	Warning only
Oil temperature	PT1000	-40 - 150	°C	30 sec from start / 5 sec	132	135	See derating map
Water In fuel switch	Digital	ON/OFF		All the time	Water in fuel	NA	Warning only
Wet Exhaust temp	PT200	0 - 850	°C	30 sec from start / 5 sec	90	95	See derating map

Sensors (rpm dependent)	Signal	Range	Unit	Initial Delay / Delay	Warning Level / Derating Level / Shutdown Level rpm Map					Comment
					0 rpm	1200 rpm	2000 rpm	2500 rpm	3600 rpm	
Charge air temperature	50-0 kΩ	-40 - 130	°C		0 rpm	1200 rpm	2000 rpm	2500 rpm	3600 rpm	
Warning Level			°C	30 sec from start / 5 sec	100	100	70	70	70	
Derating Level			°C							See derating map
Fuel pressure	0,5-4,5 V	0-200	kPa		0 rpm	600 rpm	1600 rpm	2600 rpm	3600 rpm	
Warning Level			kPa	30 sec from start / 5 sec	50	50	50	50	50	
Derating Level			kPa	NA	NA	NA	NA	NA	NA	
Oil pressure	0,5-4,5 V	0-700	kPa		0 rpm	600 rpm	1200 rpm	2000 rpm	3600 rpm	
Warning Level			kPa	30 sec from start / 5 sec	-50	75	150	200	230	
Derating Level (30% remain trq.)			kPa	10% trq. decr. per sec	-50	70	120	170	200	

Warning = Yellow Lamp active

Derating = Red Lamp active

Derating map

Charge Air Temp [°C]	rpm	75°C	80°C	85°C
Remaining torque in %	600	100%	100%	100%
	1600	100%	100%	100%
	2200	100%	75%	50%

Coolant temp [°C]	rpm	99°C	104°C	108°C
Remaining torque in %	600	100%	100%	100%
	1600	100%	85%	75%
	2200	100%	75%	50%

Oil temp [°C]	rpm	135°C	137.5°C	140°C
Remaining torque in %	600	100%	100%	100%
	1600	100%	85%	75%
	2200	100%	75%	50%

Oil pressure [kPa]	rpm	
Remaining torque in %	600	85%
	1600	70%
	2200	50%

Wet exhaust temp [°C]	rpm	95°C	105°C	115°C	125°C
Remaining torque in %	600	100%	100%	100%	100%
	1600	100%	85%	80%	75%
	2200	100%	75%	65%	50%

Document No	Issue Index
23609268	03

Transmission: Control and Monitoring System: DPI Drive							Engine protection action
Sensors	Signal	Range	Unit	Warning Initial Delay / Warning Delay	Warning Level	Derating Level	
Gear oil temperature (EVC)	50-0 kΩ	-30 - 130±4%	°C	N/A	95		Warning only
Gear oil pressure (EVC)	Frequency	0-3000±3%	kPa	60 sec from start / 7 sec	700		Warning only

Transmission: Control and Monitoring System: Reverse Gear							Engine protection action
Sensors	Signal	Range	Unit	Warning Initial Delay / Warning Delay	Warning Level	Derating Level	
Gear oil temperature (EVC)	50-0 kΩ	-30 - 130±4%	°C	N/A	95		Warning only

Transmission: Control and Monitoring System: IPS Drive							Engine protection action
Sensors	Signal	Range	Unit	Warning Initial Delay / Warning Delay	Warning Level	Derating Level	
Gear oil temperature (EVC)	50-0 kΩ	-30 - 130±4%	°C	N/A	95		Warning only
Gear oil pressure (EVC)	Frequency	0-3000±3%	kPa	60 sec from start / 7 sec	700		Warning only

VOLVO PENTA

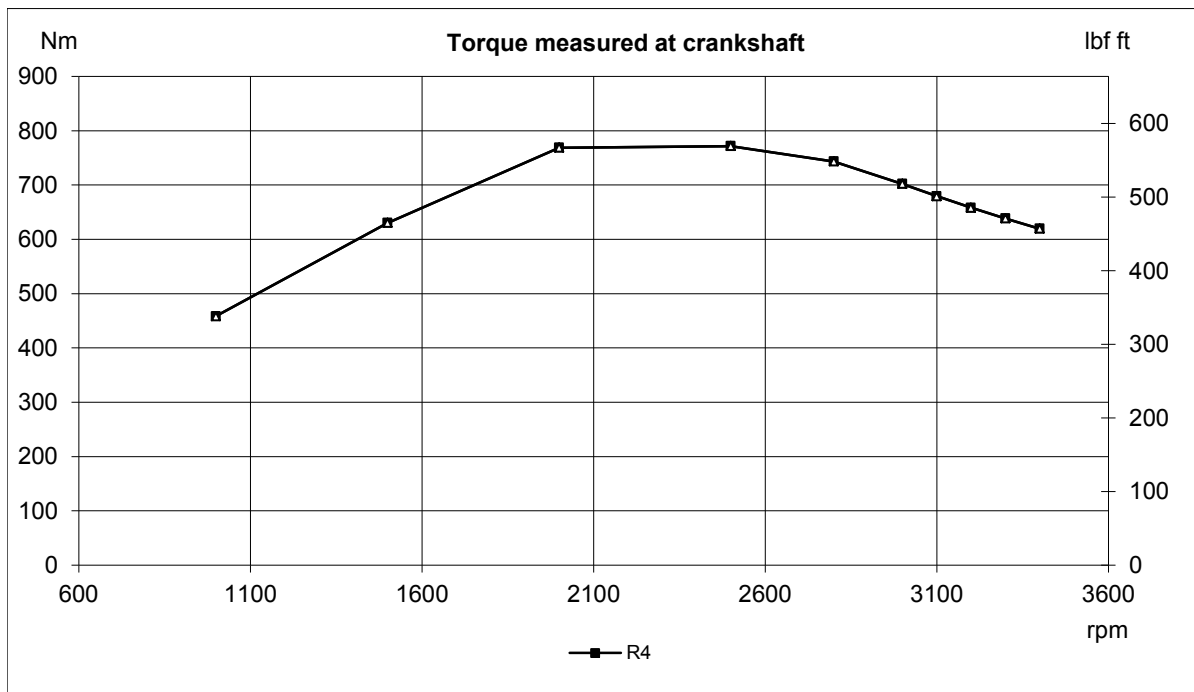
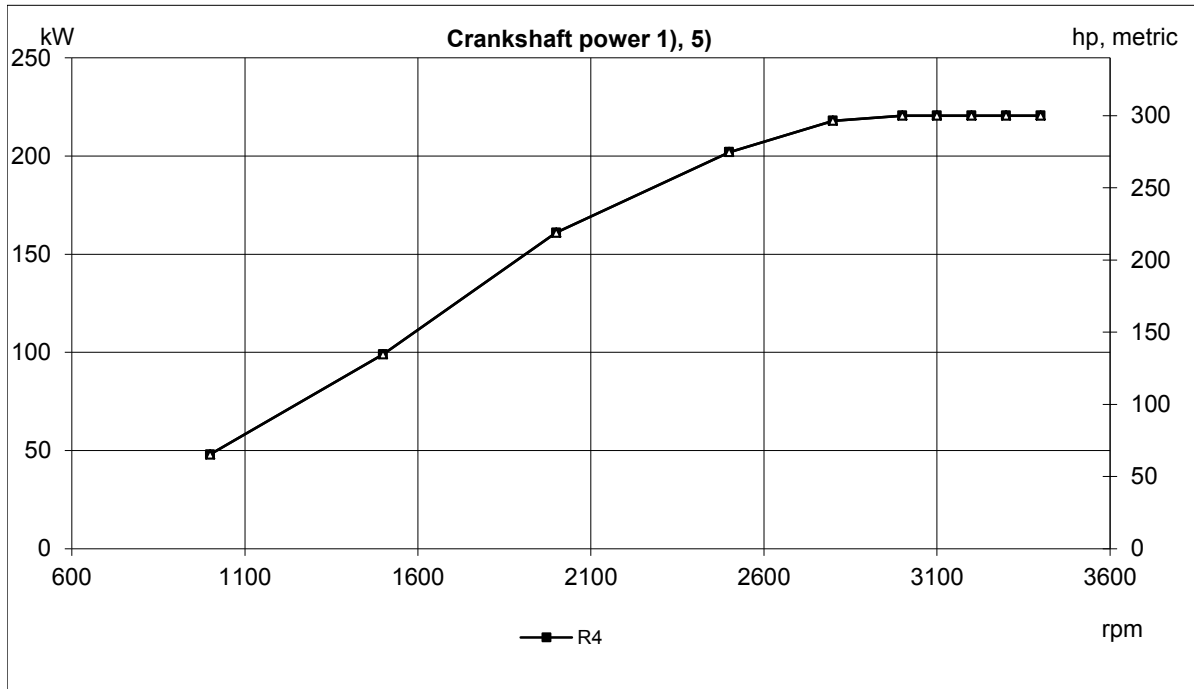
Document No

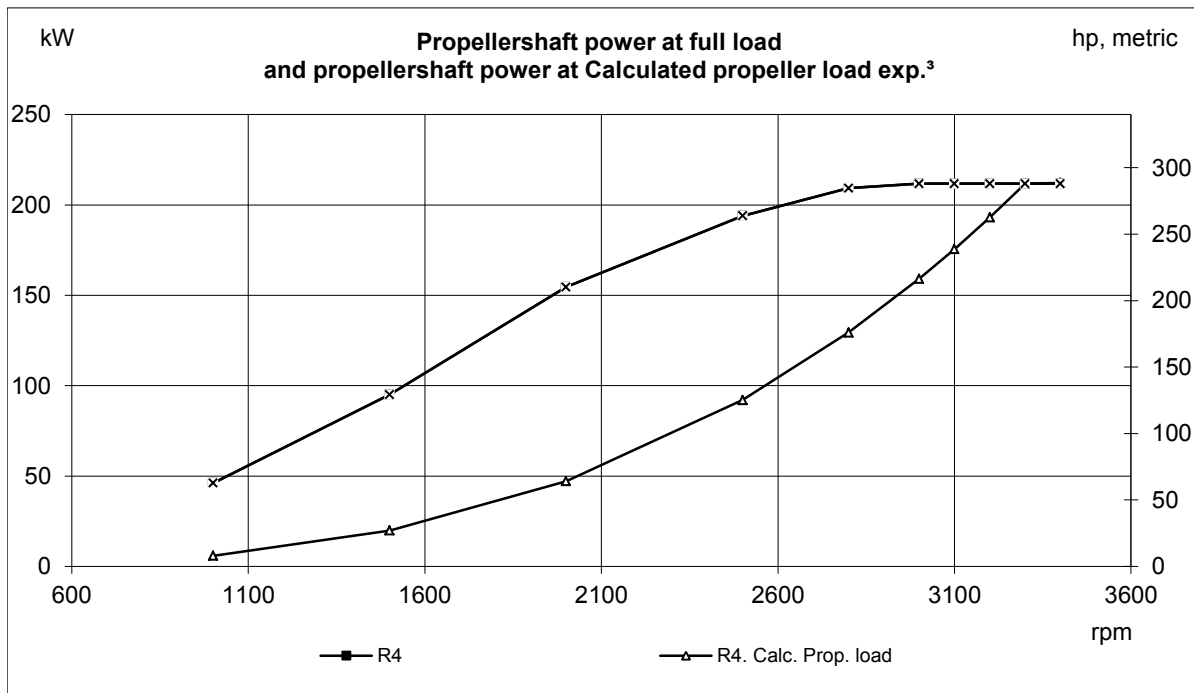
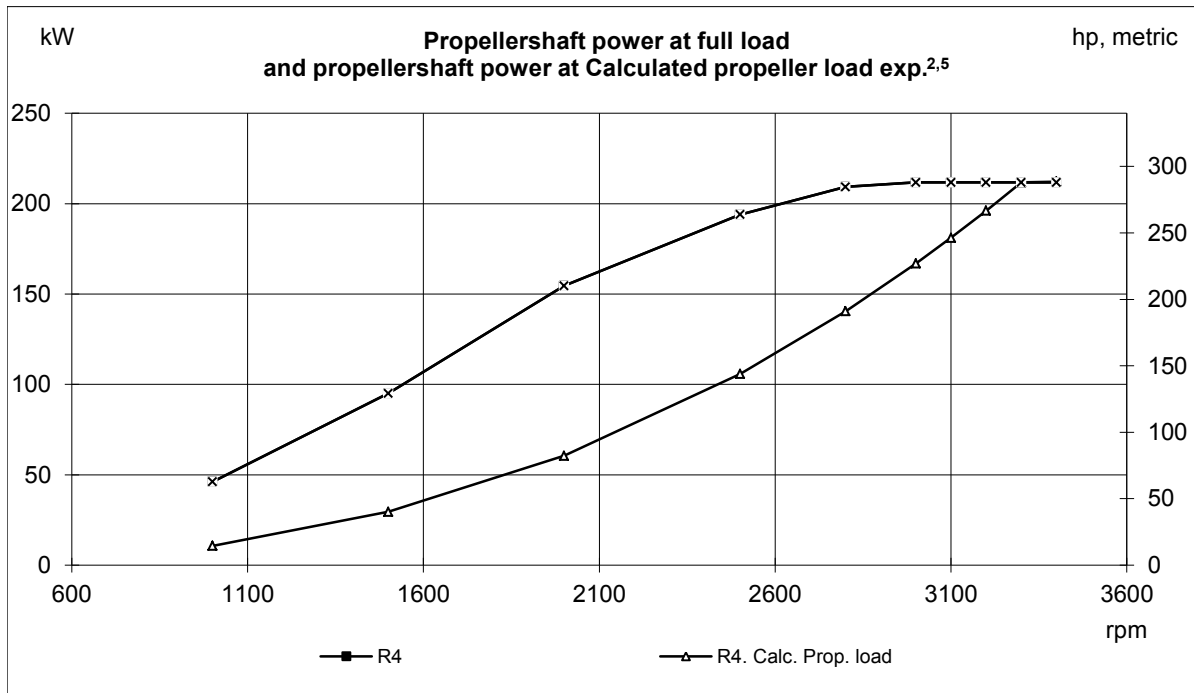
Issue Index

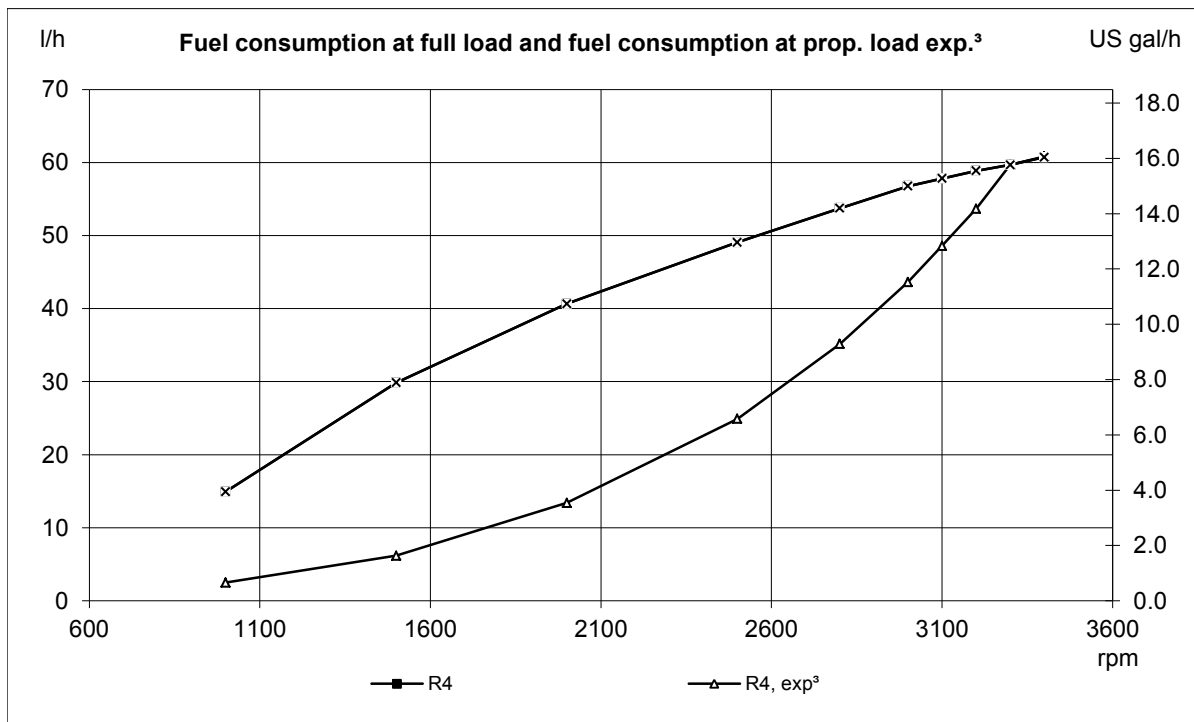
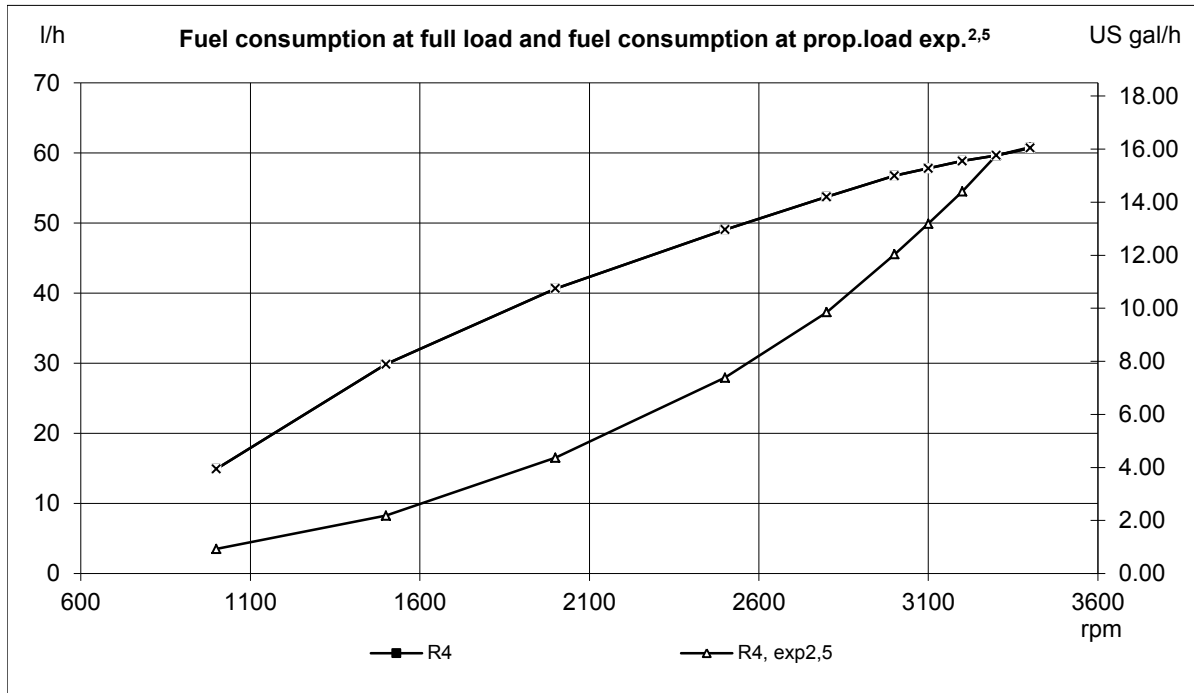
D6-300 INB

23609268

03







VOLVO PENTA

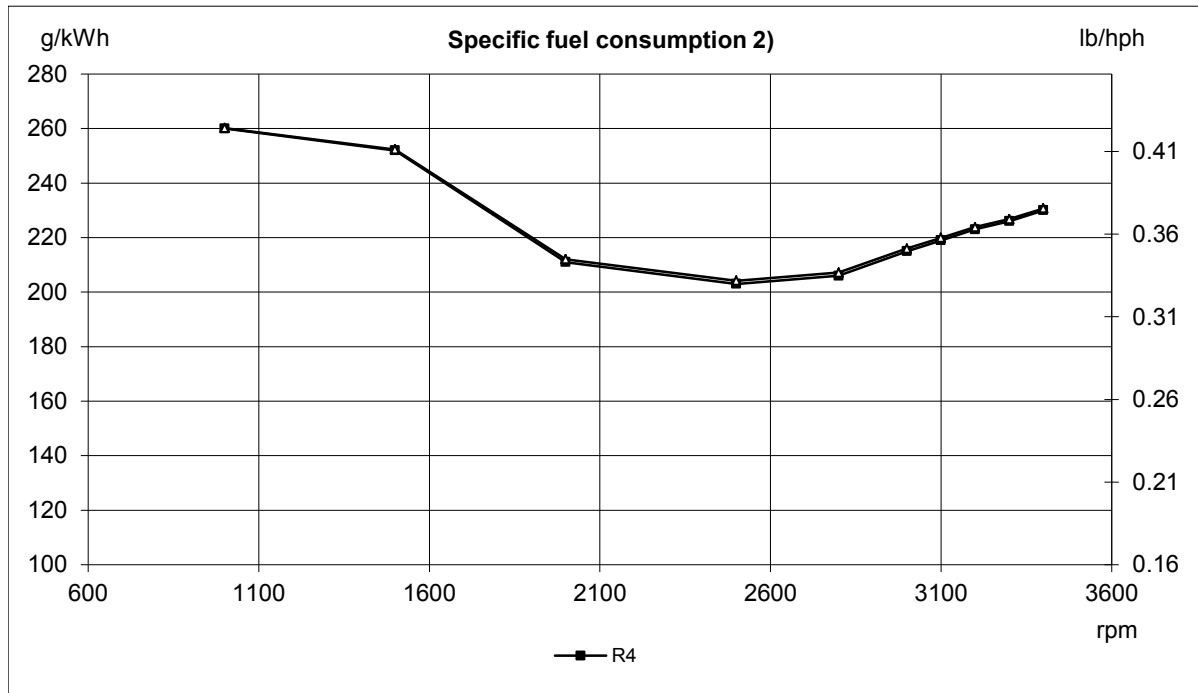
Document No

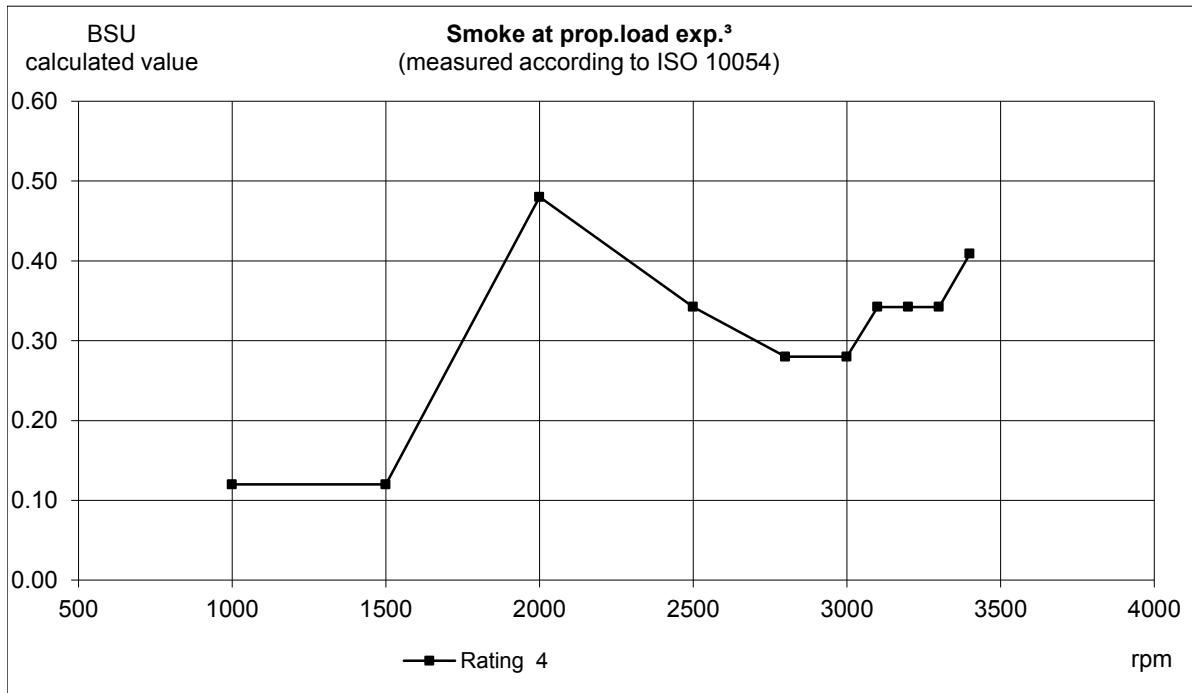
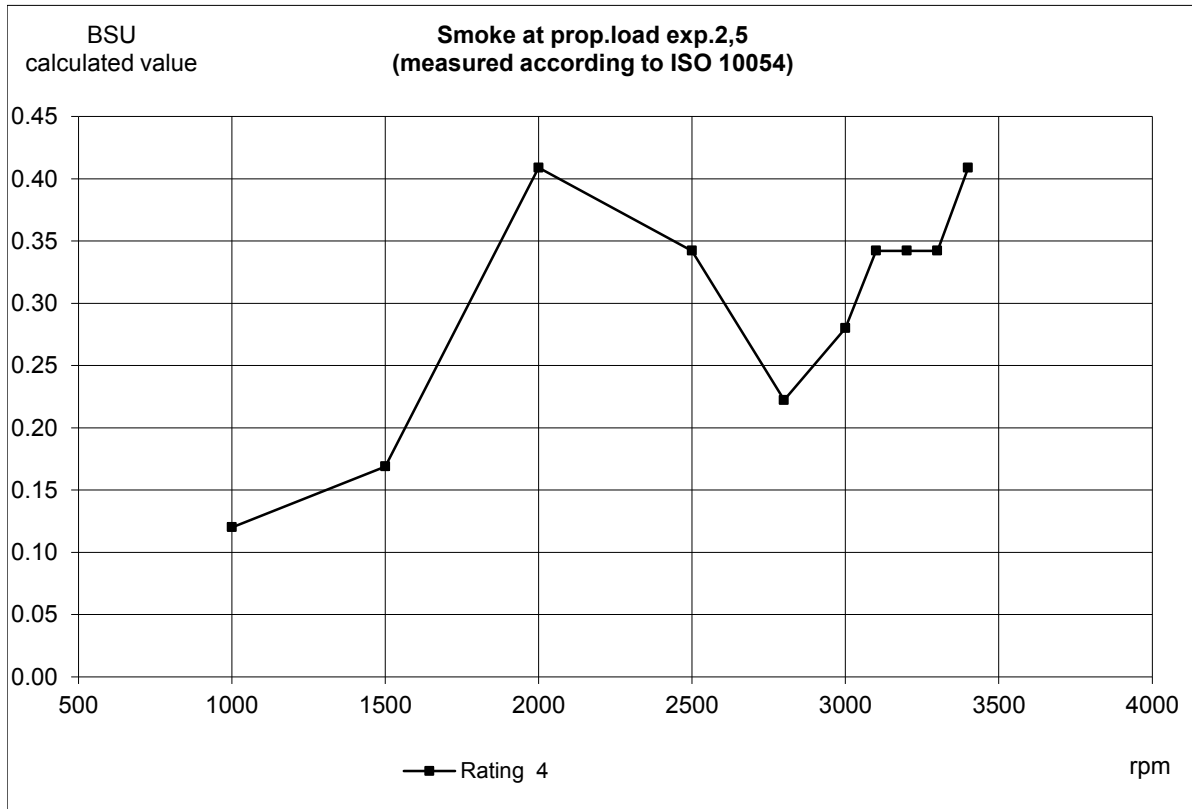
23609268

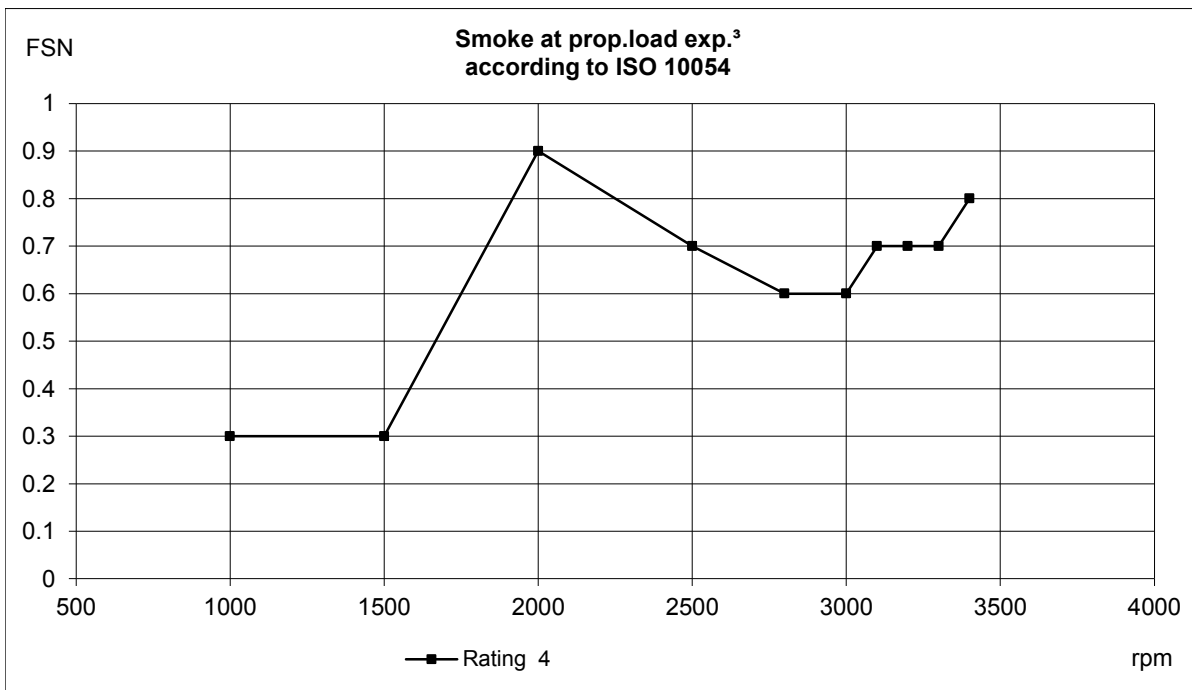
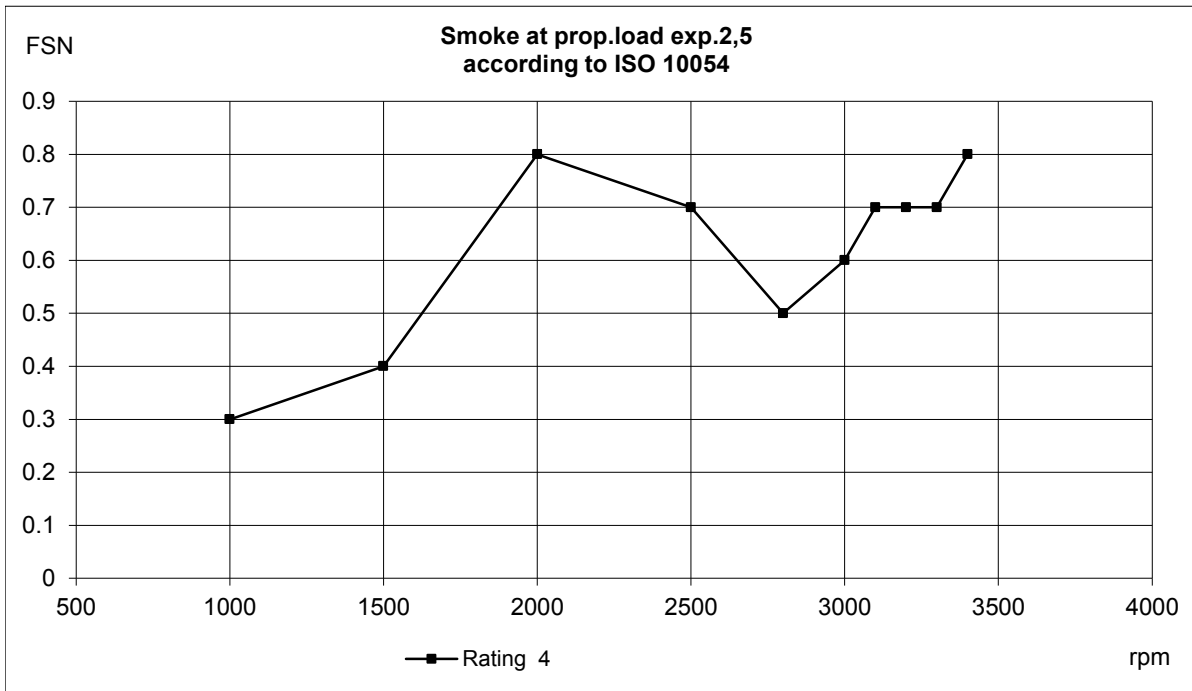
Issue Index

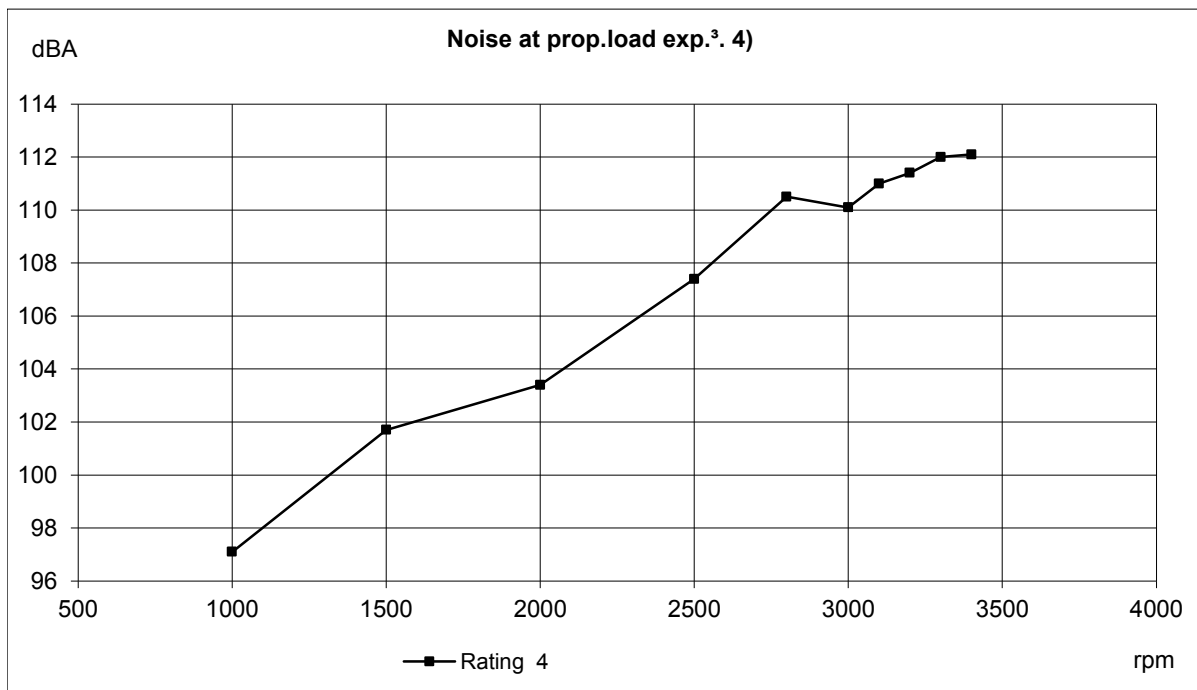
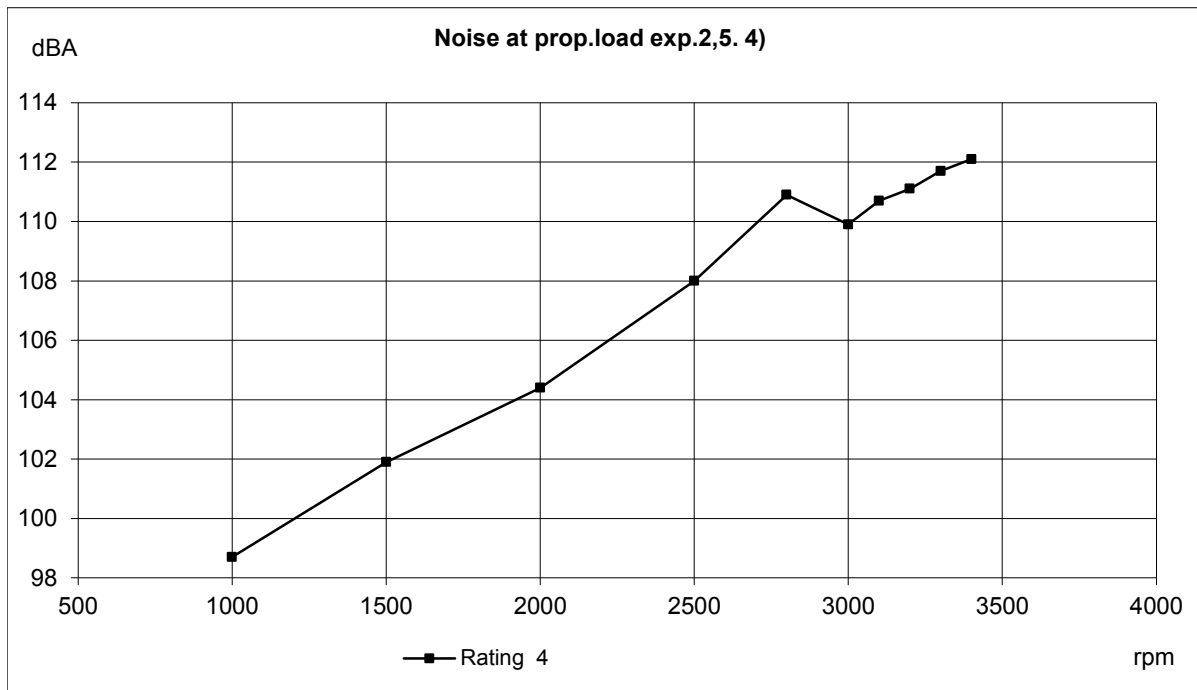
03

D6-300 INB









VOLVO PENTA	Document No	Issue Index
	23609268	03

D6-300 INB

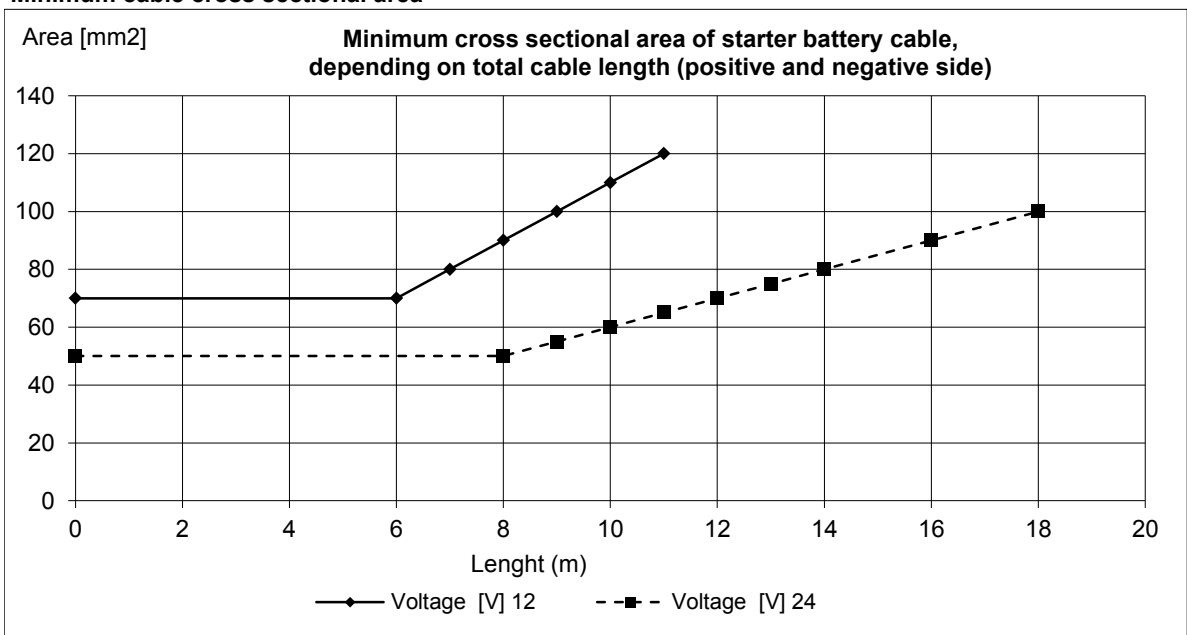
Battery capacity 12V

Temp [°C]	Min battery size [Ah]	CCA EN (Cold cranking Amps) [A]	Max line resistance @ 20°C [mΩ]	Recommended max cable resistance @ 20°C [mΩ]	Min cross sectional area (due to heat increase) [mm²]
5	95	750 (EN)	2	1.8	70
-5	110	850 (EN)	2	1.8	70

Battery capacity 24V

5	70	600(EN)	2	1.8	50
-5	75	750 (EN)	2	1.8	50

Minimum cable cross sectional area



Fuses size:

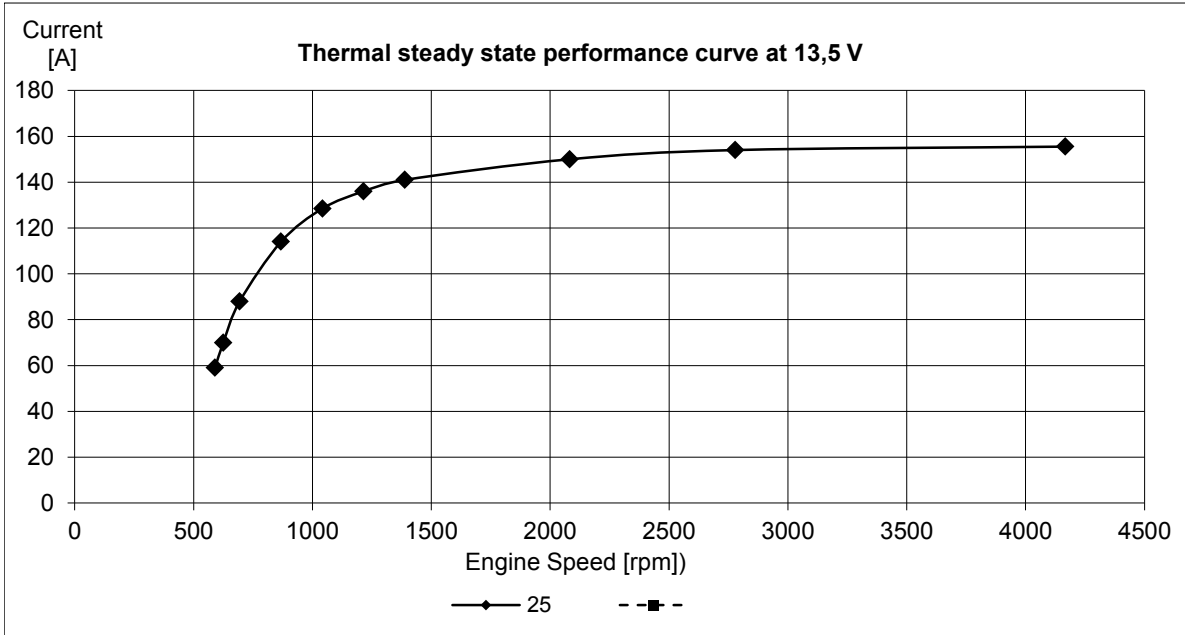
	[A]
Engine:	10
Control system:	10

Max current consumption during normal operation:

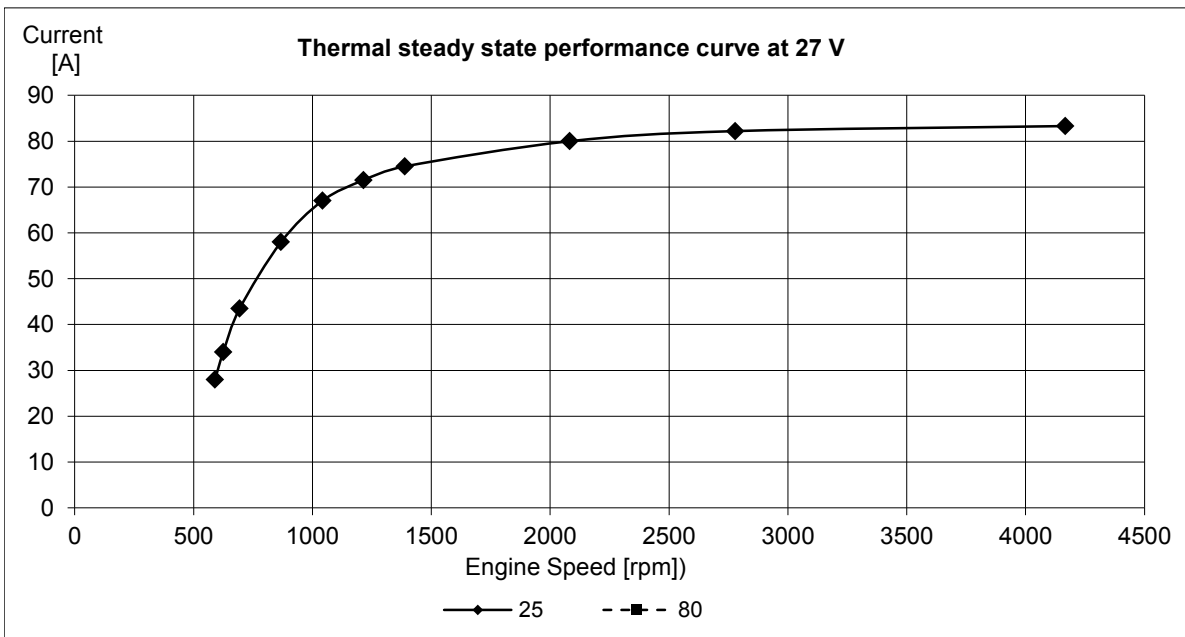
	[A]
Engine :	2 - 4

Alternator data:

Standard alternator charge curve (current vs. engine speed.)



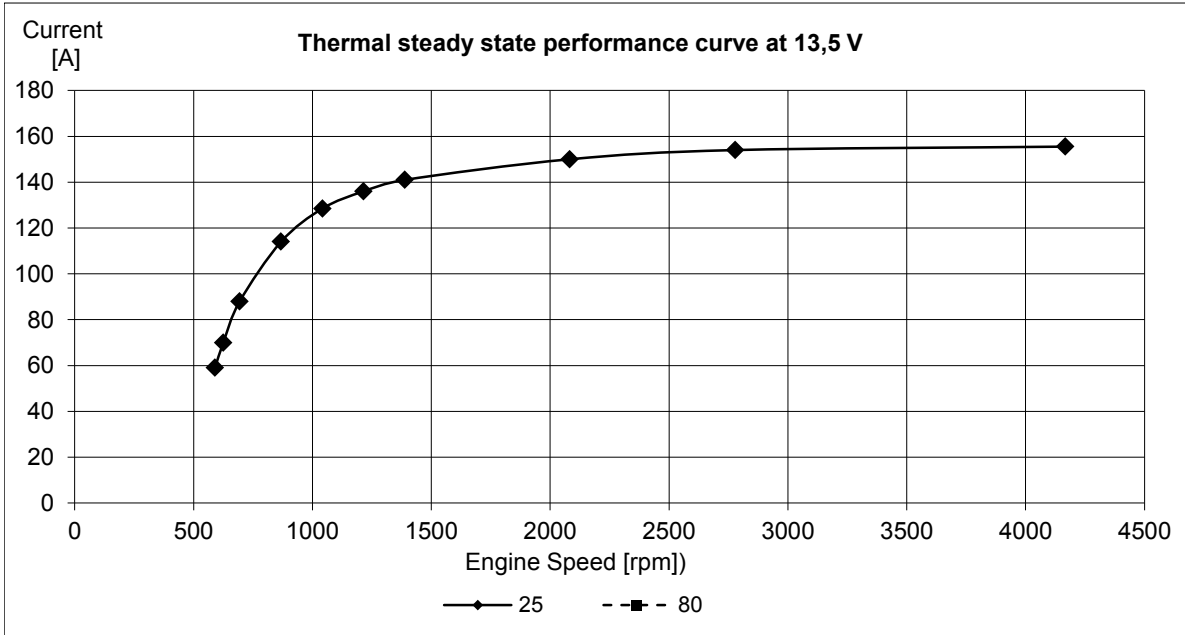
Constant charge voltage: [V]	14.3	+/- 0,3
------------------------------	------	---------



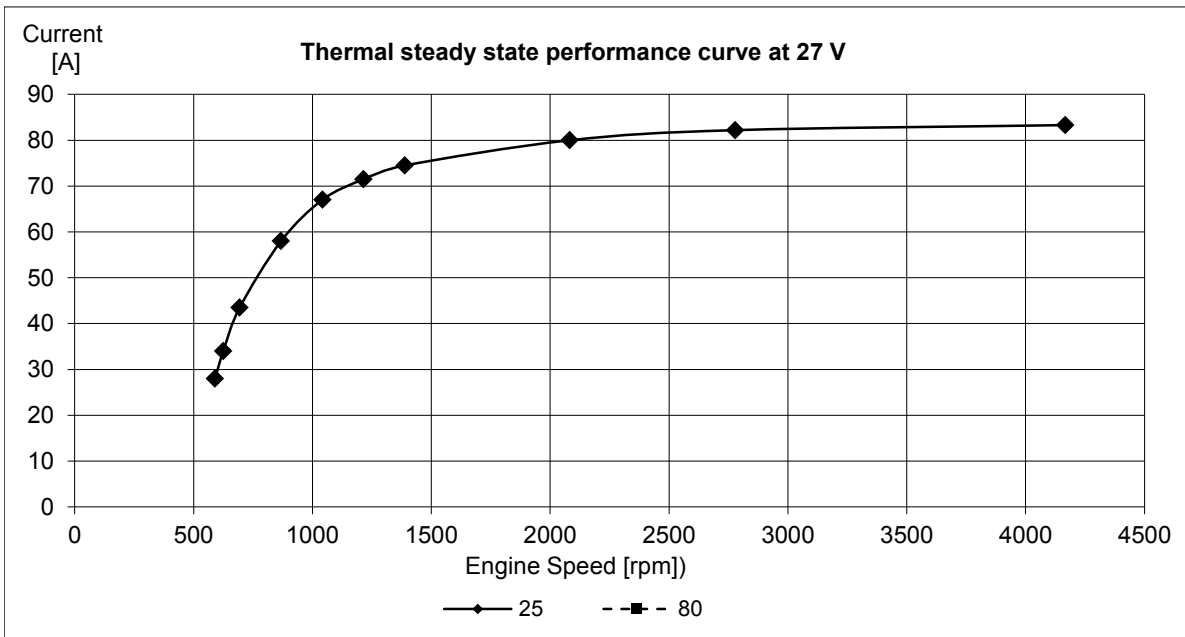
Constant charge voltage: [V]	28.3	+/- 0,3
------------------------------	------	---------

Alternator data:

Extra alternator charge curve (current vs. engine speed.)



Constant charge voltage: [V]	14.3	+/- 0,3
------------------------------	------	---------



Constant charge voltage: [V]	28.3	+/- 0,3
------------------------------	------	---------